

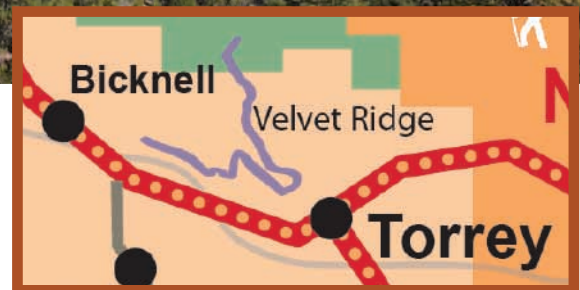
VELVET RIDGE/HELL'S HOLE

Southern Utah's Most Unique Landscape



LOCATION

Both the Velvet Ridge and Sand Creek staging areas are located off Highway 24 between Bicknell and Torrey.



TRAIL TYPE

This is an ATV and bicycle trail. They are the same path so be aware of other people.

DISTANCE

From the Velvet Ridge staging area the trail is 19 miles round trip. From the Sand Creek staging area it is a similar distance depending on what you do in the ATV/OHV recreation area.

DIFFICULTY

Moderate. There are a couple of spots that are a little difficult, but are still passable. The last mile to Hell's Hole is extreme.

TRAIL DESCRIPTION

The trail mostly consists of abrasive bennoite and loose red rock. Towards Hell's Hole the trail gets sandy.

EQUIPMENT

This trail has been designated for ATV and mountain bikes.

ENVIRONMENT

The weather varies greatly and will affect the trail conditions greatly. Be sure to check the Visitors Center before heading out.

SAFETY

Make sure to wear proper equipment especially on the Ridge, because the surface is so unsteady.



TAKE IN THE VIEWS.

Once you have entered Hell's Hole, you can explore the entire area on foot. The Hell's Hole area is filled with rock formations that are ideal for walking and climbing.

The elevation at Hell's Hole is 8650 ft.

GET A CLOSER LOOK.

Here are a few coordinates for different points of interest along the trail.

Sand Creek Trailhead:

N 38d18'38" W 111d25'59"

Hell's Hole Trail:

N 38d19'41" W 111d26'26"

Velvet Ridges Trailhead:

N 38d18'37" W 111d31'04"

Great Western Trail Overlook:

N 38d18'41" W 111d27'54"



DO IT AT YOUR OWN PAGE.



There is so much to do along this trail that rushing it could almost be impossible. Indicated on the map is an area with green trails which is an OHV/ATV recreation area. This play area has no designated trails, just exploring. Boundaries are well marked. So make sure you take some time to play here. Just make sure to ride with the proper equipment and to make smart choices in riding.

Trail tip: Be sure to always wear the proper equipment. Because this trail is shared with other kinds of travelers, it is important for you to be safe and to consider the safety of others.

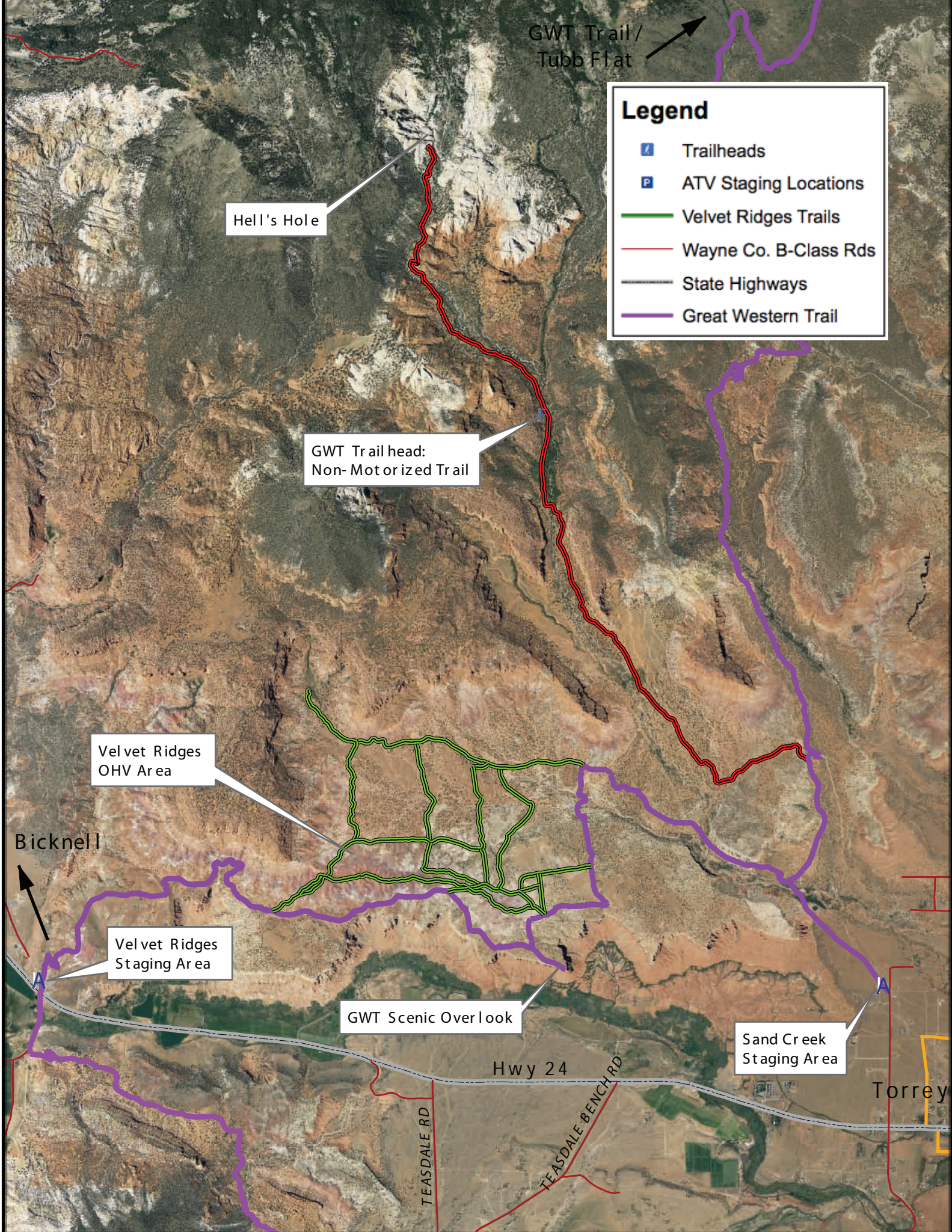
If you have any further questions, please contact us at:

1-435-425-3365

info@capitolreef.travel







www.capitolreef.org





GWT Trail/
Tubb Flat

Legend

-  Trailheads
-  ATV Staging Locations
-  Velvet Ridges Trails
-  Wayne Co. B-Class Rds
-  State Highways
-  Great Western Trail

Hell's Hole

GWT Trail head:
Non-Motorized Trail

Velvet Ridges
OHV Area

Bicknell

Velvet Ridges
Staging Area

GWT Scenic Overlook

Sand Creek
Staging Area

Hwy 24

TEASDALE RD

TEASDALE BENCH RD

Torrey