

THOUSAND VIEWS TRAIL

Ride The Most Scenic Trail in Southern Utah



The View from the Top

This trail can only be describe in one way: breathtaking. There are so many different views that are unique and separate from the last. The diversity around every corner will open up a whole new side of southern Utah's beauty.

LOCATION

4 staging areas for the trail. One is located off of the 72, one in Lyman, Bicknell, and the Sand Creek staging area comes in from Torrey

TRAIL TYPE

The Thousand Views trail is for ATV's only. There are several places to stop and hike further up the mountain.

DISTANCE

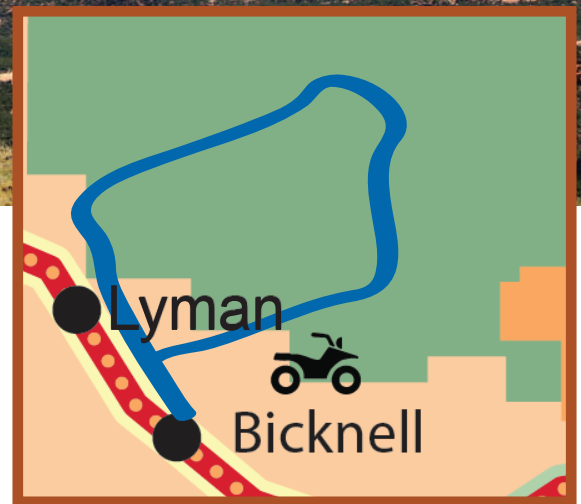
The trail is 31 miles long. Plan extra time in case of rough roads and for taking time to explore the area.

DIFFICULTY

Moderate to Difficult. Use wise judgment when driving on the road. Weather conditions can change rapidly causing parts of the road to become impassible and difficult for even the most experienced rider.

TRAIL DESCRIPTION

The trail goes up and around Boulder Mountain. At some points the elevation can be up to 9,800 to 10,000 feet. There are many steep inclines.



EQUIPMENT

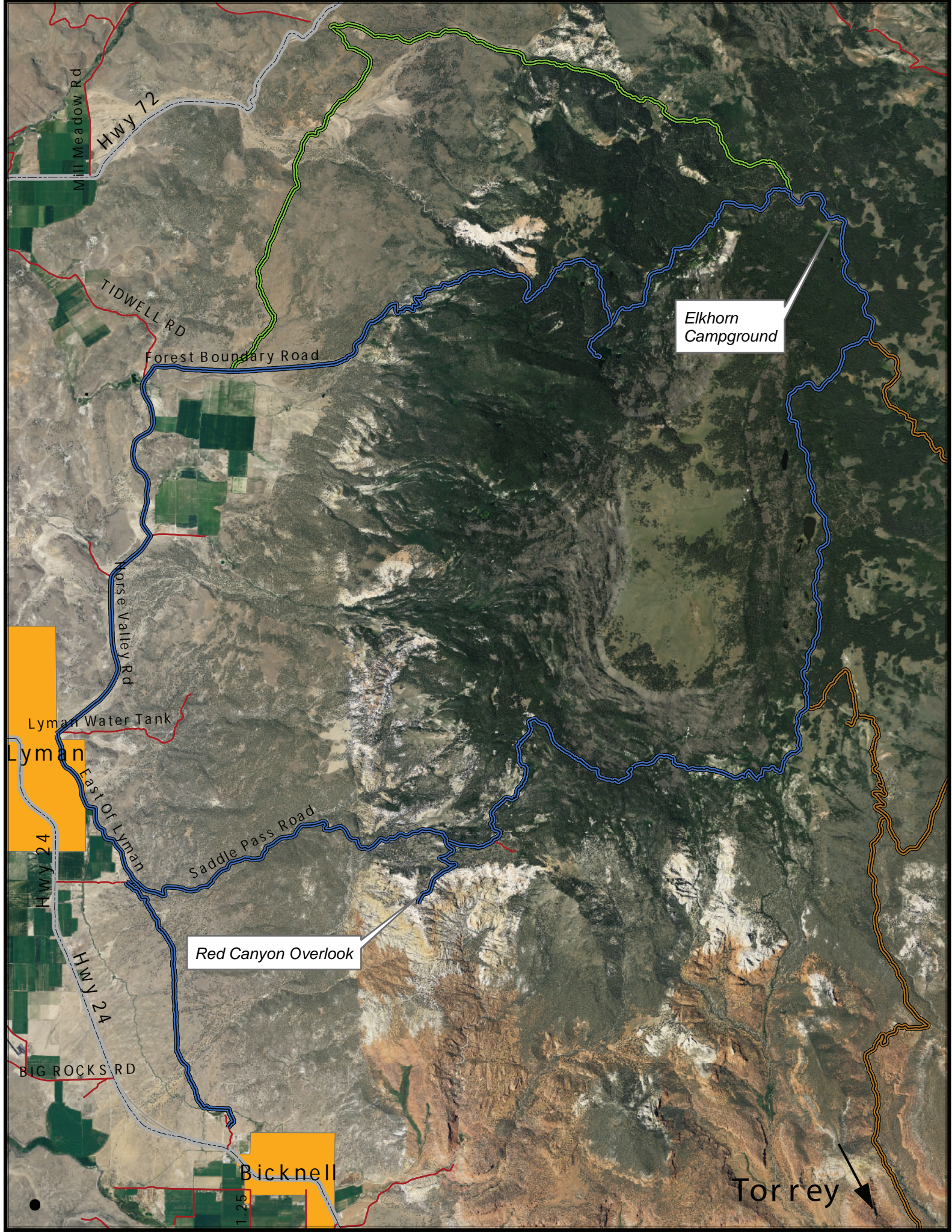
This loop was designed for an ATV only. The ATV can be no wider than 50 inches, including the wheels.

ENVIRONMENT

The weather varies greatly and will affect the road conditions greatly. Be sure to check the Visitors Center before starting out on your tour.

SAFETY

If you run into problems, help may not be able to arrive for days so make sure you are prepared with enough food, water and clothing.



Elkhorn
Campground

Red Canyon Overlook

Lyman

Bicknell

Torrey

Hwy 72

TIDWELL RD

Forest Boundary Road

Norse Valley Rd

Lyman Water Tank

East Of Lyman

Saddle Pass Road

Hwy 24

Hwy 24

BIG ROCKS RD

1.25



TAKE IN THE VIEWS.

The trail is called "Thousand Views for a reason. At the Red Canyon Overlook you will see Hell's Hole, which you can hike in to see the full view. The southeast side of the trail opens up to a view of the valley below with the towns of Lyman, Torrey, and Bicknell. Lookout Point mile each way off main road and Deep Lake Overlook is not far from the lake.

GET A CLOSER LOOK.

This trail is lined with several places to pull over and go for a short hike. There is plenty of wildlife that you will be able to see in its natural habitat as you take a minute to explore the trails. The scenery alone is enough to make someone get a little closer to the area that surrounds it.



DO IT AT YOUR OWN PACE.



Take advantage of the beauty along the trail.

The trail is lined with different places to park and have some fun. Neff Reservoir is a mile hike, round trip from the trail where you can do some great fishing and have a beautiful view. There are also two campgrounds, Deep Creek and Elkhorn, where you can make homebase for the day while you explore the different parts of the trail.

Trail tip: There are several places to start the trail. We recommend that you stage from a commercial area. Even if you are planning to camp along the trail. This is not only for convenience to you, but for your safety.

If you have any further questions, please contact us at:

1-435-425-3365
info@capitolreef.travel

www.capitolreef.org

