

SUNGLOW TRAIL

Scramble Up Boulders of a Box Canyon



LOCATION

At the back of the campground (north end) you will find a picnic / camp-site that also has a trail head for this short but beautiful hike into a box canyon.

TRAIL TYPE

This trail is for hiking only.

DISTANCE

The distance of this trail is 0.65 miles, (1.2 km). The trail head elevation is 7283 and the elevation gain is 342 ft.

DIFFICULTY

Easy-Moderate. This trail is not recommend for less active or older people who are not capable of some minor boulder scrambling.

TRAIL DESCRIPTION

Mostly a dirt path that is rocky at points. Small boulders block different parts of the trail.



EQUIPMENT

This trail does not require any extra equipment.

ENVIRONMENT

May be dangerous during rain storms or high snow-melt times of year due to flooding.

SAFETY

Be sure to check the weather before you start the trail to ensure the trail will be safe.

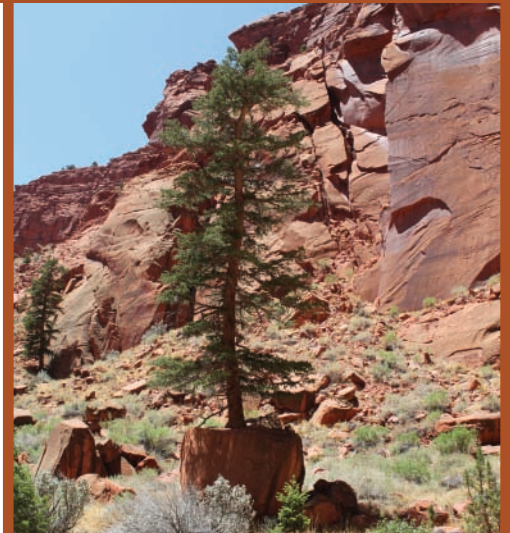


TAKE IN THE VIEWS.

Much of this hike follows the course of a spring fed stream follows. You will find yourself hopping the small stream, scrambling over boulders and climbing small rock areas to ascend to another level and continue. This is a great fun hike with a variety of sights to take in.

GET A CLOSER LOOK.

Sunglow trail has several little waterfalls (4 feet high) that are full of life and color. A sight you won't want to miss is a tree that grows out of a giant boulder at the back of the box canyon. The tree has literally split the boulder in two with it's roots and is a natural wonder to behold.



Trail tip: This trail is a great hike to do as a family. The children will have fun being adventurous and climbing all over the rocks and boulders.

If you have any further questions, please contact us at:

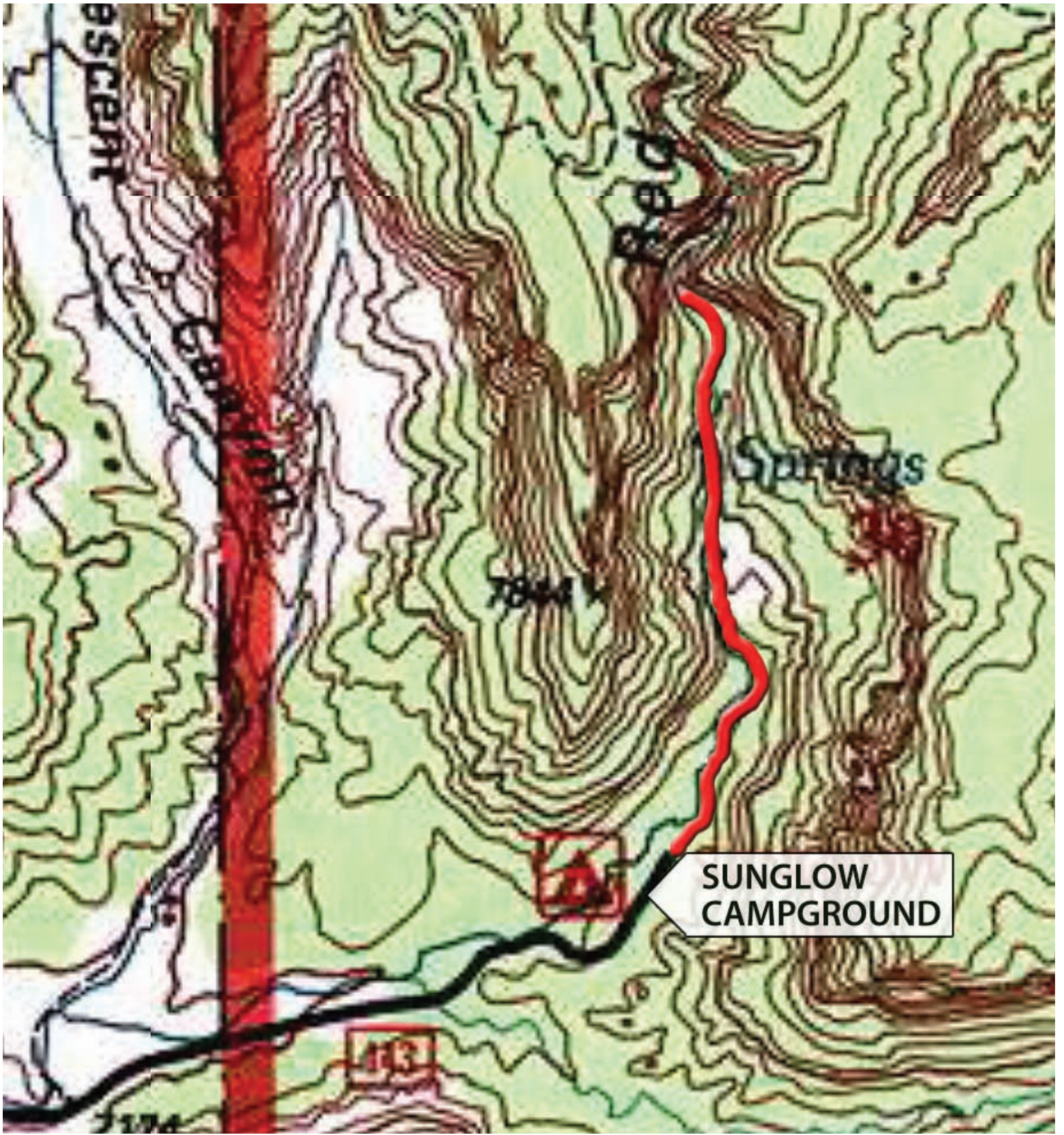
1-435-425-3365
info@capitolreef.travel

www.capitolreef.org

DO IT AT YOUR OWN PACE.

This may be a place children will enjoy as they can climb over boulders but parents or guardians should be close and make sure to assist on slightly difficult areas. This area is a fun place for all ages to explore.





SUNGLOW
CAMPGROUND