

SHILLELAGH TRAIL

Explore the Irish Slot Canyons



LOCATION

This trail is located 20 miles south of Hansville just off Hwy 95.

TRAIL TYPE

This trail is for hiking and canyoneering. You must have equipment to complete the trail.

DISTANCE

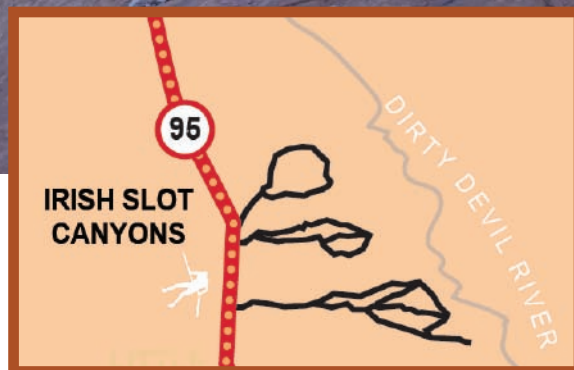
This slot canyon is about 4.5 miles long.

DIFFICULTY

Moderate. There are some river crossings that they have put cement down for path to cross. The water is 1-2 feet deep.

TRAIL DESCRIPTION

The whole trail is B Class county maintained road. Spur roads that are open to riding are D class county roads. There are also several washes along the trail.



EQUIPMENT

This trail requires complete hiking and climbing technical gear complete the entire hike.

ENVIRONMENT

This slot canyon is open year round unless there is snow.

SAFETY

Don't do this trail or any of the slot canyons alone. There are parts that are dangerous.



TAKE IN THE VIEWS.

Shillelagh is a beautiful slot canyon that is the first and simplest of the Irish slot canyons. This winding pathway will be narrow and challenging, but is worth the incredible views.

GET A CLOSER LOOK.

This slot canyon just south of Hanksville is the most simple of the three Irish Canyons. There are many obstacles along the way that will require help to pass over, but it is an exciting adventure for anyone who is willing to take the challenge.



DO IT AT YOUR OWN PACE.

This trail does have several obstacles that will cross your path. Be sure that you safely negotiate these obstacles rather than rushing through them. It is not uncommon for people to get hurt.

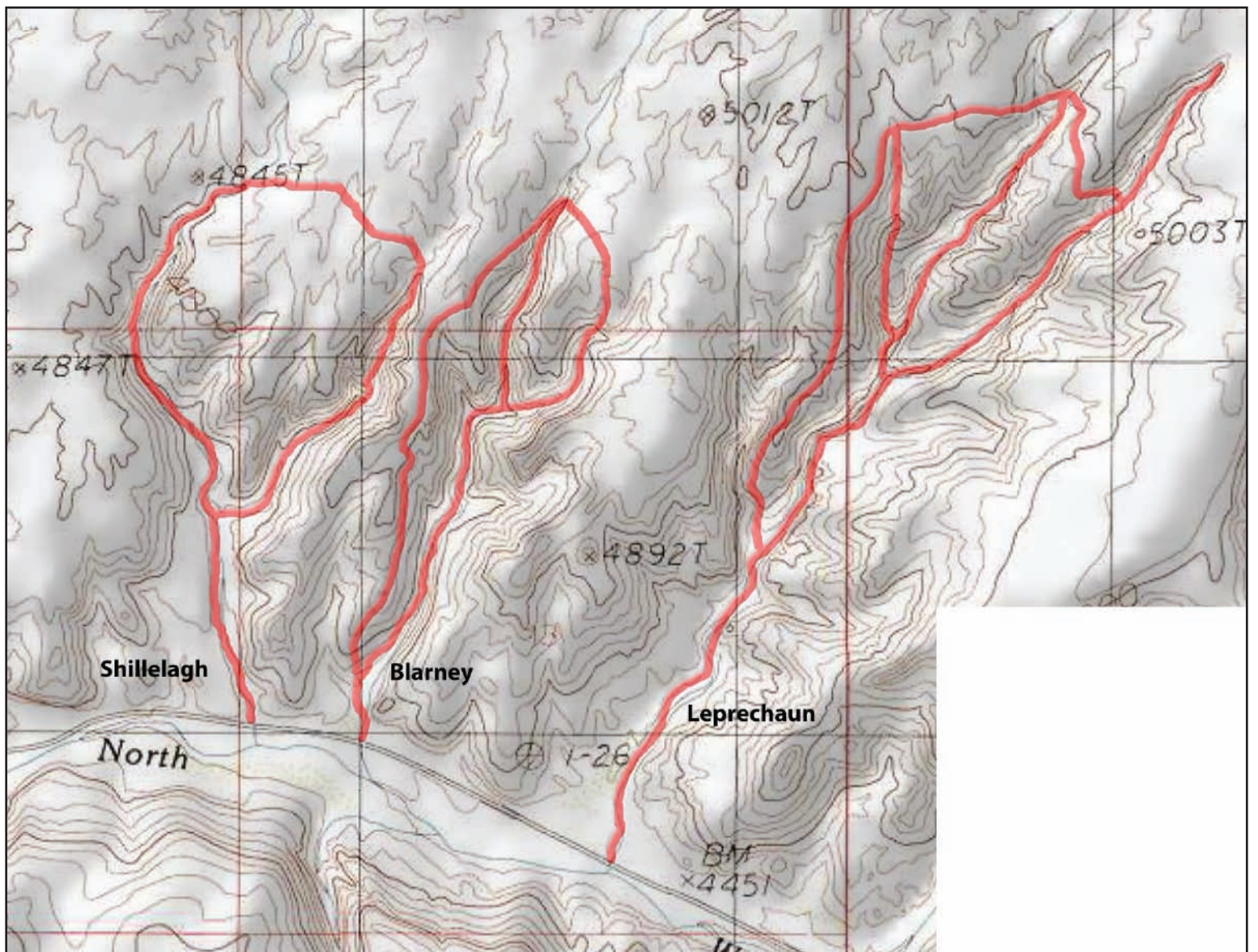
Trail tip: Make sure that you have good shoes that can get wet. Also wear long sleeves and pants so you don't get scraped up!

If you have any further questions, please contact us at:

1-435-425-3365
info@capitolreef.travel

www.capitolreef.org





Trailhead coordinates: 38.02143,-110.548317