



CAPITOL REEF COUNTRY

TRAVEL GUIDE



TABLE OF CONTENTS

3	Welcome
Locations	
4-7	Capitol Reef National Park
8	Goblin Valley State Park
9	Canyonlands National Park
10-11	Highlands
12-13	East of the Reef
14	Robbers Roost
14	Bicknell Bottoms
15	Lake Powell
15	Henry Mountains
16	Scenic Byway 12
Activities	
17	Hiking/Backpacking
17	ATVs
18	Mountain Biking
18	Off-Road Tours
19	Fishing
20	Canyoneering
20	Wildlife
21	Stargazing
21	Horseback Riding
Services	
22	Hotels
22	Bed & Breakfasts
23	Lodges & Casitas
23	Cabins
23	Restaurants
24	RV Parks & Campgrounds
25	Guides & Outfitters
26-27	Map



WELCOME

Discover Capitol Reef Country in Wayne County, Utah. In this guide you'll find information about lodging, camping, dining, shopping, exploring and so much more in beautiful Wayne County.

Located in the heart of red rock country, this area of southern Utah has a diverse landscape unlike any other in the state—red rock formations, pristine meadows and alpine forests as well as lush green valleys. The landscape makes Capitol Reef Country ideal for adventurous outdoor activities and attractions, or just a quiet picnic!

This area is home to the enchanting communities of Bicknell, Caineville, Fremont, Grover, Hanksville, Loa, Lyman, Teasdale and Torrey. Our major attractions include Capitol Reef National Park (sometimes misspelled Capital Reef), Canyonlands National Park, Boulder Mountain, Thousand Lake Mountain, the Factory Butte badlands and Highway 12, Utah's first All American Road.

So please, take a look and enjoy your stay in Capitol Reef Country!



CAPITOL REEF NATIONAL PARK

Capitol Reef National Park lies in Utah's south-central desert, an oasis of colorful sandstone cliffs, impressive domes and soaring monoliths. Once called "Wayne Wonderland," the park got its name from the great white rock formations which resemble the U.S. Capitol building and from the sheer cliffs that presented a barrier to early travelers. Prospectors visiting the area referred to the barrier (now known as the Waterpocket Fold) as a reef.

Early inhabitants referred to the area as the "land of the sleeping rainbow" because of its beautiful contrasts— multi-colored sandstone surrounded by verdant riverbanks and arid desert vegetation—all nestled beneath deep blue skies. The area was designated as a national monument in 1937 and reclassified as a national park in 1971. The park is open year-round.

Access to The Park

The gateway town of Torrey is just eight miles west of Capitol Reef National Park's visitor center, on Highway 24. The town offers lodging, restaurants and easy access to the scenic wonders inside the park. Other neighboring communities on the west side of Capitol Reef, such as Grover, Teasdale, Bicknell, Lyman and Loa, also make great staging areas for exploration of this national park.

Entering from Torrey offers a view of the Waterfold Pocket. Caineville, Hanksville and Notom are located on the east side of Capitol Reef, also on Highway 24, and both communities make great locations from which to view Capitol Reef or other nearby attractions such as Canyonlands National Park, Goblin Valley State Park and more.

CAPITOL REEF NATIONAL PARK

WHAT TO SEE & DO

- 1 The most distinguishing geologic feature within the park is the 100-mile long Waterpocket Fold, a protuberance in the earth's crust that has eroded into a maze of winding canyons, towering monoliths, and massive domes.
- 2 Capitol Dome is a majestic white sandstone formation that resembles the U.S. Capitol building. The park was partly named for this landmark.
- 3 Chimney Rock is a towering 400-foot-tall sandstone pillar, located three miles west of the visitor center off Highway 24 and accessible via a short hiking trail.
- 4 Hickman Bridge is a huge natural arch spanning 133 feet wide and 125 feet tall. The arch is named after Joseph Hickman, an early advocate for Capitol Reef's preservation.
- 5 The Fremont Petroglyphs were etched in sandstone by the Fremont people who inhabited the area nearly 1,000 years ago and can be seen from the Hickman Bridge Trail.
- 6 The small settlement of Fruita inside the park has more than 2,500 fruit trees, some of which were originally planted by Mormon pioneers. Today the settlement is federally owned, and visitors can stroll through the orchards and eat fruit fresh off the trees.
- 7 Cathedral Valley is a remote area in the northern end of the park where enormous monoliths soar hundreds of feet high. (Background photo)

Recommended Hikes

The **Hickman Bridge Trail** leads to Hickman Bridge, a massive natural arch. The trail is two miles roundtrip, with a 300-foot incline. The trailhead is two miles east of the visitor center on Highway 24.

Chimney Rock Loop Trail is a 3.5-mile loop with a fairly steep elevation gain at the beginning. The loop offers panoramic views of Chimney Rock and the Waterpocket Fold. The trailhead is located three miles west of the visitor center.

The **Cassidy Arch Trail** is a 3.5-mile roundtrip trail that climbs 1000 feet to an overlook above Cassidy Arch. It's named for the outlaw Butch Cassidy, who used the area as a hideout.

The **Grand Wash Trail** is 2.25 miles one way with only a 200-foot elevation change. The easy, family-friendly hike offers lots of opportunities for kids to climb, scramble and explore—and it's the trail you should hike if you only have time for one.



GOBLIN VALLEY STATE PARK

Visitors to Goblin Valley State Park will be awestruck by the thousands of mushroom-shaped sandstone formations standing sentry throughout the park. These eerie hoodoos were formed over millions of years, as layers of Entrada Sandstone eroded, and alternating layers of silt and shale were deposited with the changing climates and landscapes. The park's unique landscape provided the backdrop for the movie *Galaxy Quest*, and one look at these 'goblins' and you'll understand why.

Exploration

There are three marked hiking trails in Goblin Valley State Park, making it easy to explore in an hour or two. The park is also noted for several walls of petroglyphs and pictographs, ancient evidence of Fremont, Paiute and other Native American residents. The 3,654-acre park has a 25-unit campground, but there is also lodging in nearby Hanksville, approximately 31 miles from the east boundary of the park.

To reach this extraordinary landscape from Hanksville, travel along Highway 24 to the Temple Mountain/Goblin Valley Junction. Travel west on a paved road for about five miles, then south to the park entrance.

CANYONLANDS NATIONAL PARK

Canyonlands National Park lies to the east of Capitol Reef National Park and is one of the most stunning parks in the United States.

Much of the western edge of Canyonlands National Park is most accessible from highway 24 near Hanksville and Goblin Valley State Park. This is just one more example of how visitors to the Capitol Reef area are able to experience an abundance of adventure and scenery within a close geographic area.

The Maze

The Maze section of Canyonlands National Park is one of the most untamed and remote areas in all of Utah. The sheer canyons and ravines of the Maze feature difficult trails leading to Shot Canyon, Water Canyon, Horse Canyon and other areas in the "Land

of the Standing Rocks." Expect to spend several days exploring this area and come well-prepared as there are no amenities or potable water here.

Horseshoe Canyon

The Horseshoe Canyon section of Canyonlands is 20 miles northwest of the Maze. Hundreds of ancient Indian pictographs dating back as far as 2,000 B.C. highlight this area of the park.

A four-wheel drive vehicle is recommended for the narrow, two-mile spur road that leads to the trailhead to the four pictograph "galleries." A difficult 3.25-mile trail leads to the some of the greatest rock art on the Colorado Plateau. The winding trail drops 600 feet below the slickrock canyon rim and follows a soft sand dry wash.



THE HIGHLANDS

The Western Highlands zone includes the Boulder and Thousand Lakes Mountains which rise to an elevation of well above 11,000 feet. These high mountain zones offer serene getaways for hiking, horseback riding and fishing. Local communities are situated in nearby valleys and offer picturesque views in all directions.

Local services include lodging, dining and shopping. This entire area is ideal for summer hiking, mountain biking, ATV riding and viewing wildlife. Wintertime visitors can enjoy the snow-covered elevations for snowmobiling, cross-country skiing, snowshoeing and scenic splendor. This is the western gateway to Capitol Reef National Park.

Boulder Mountain

Boulder Mountain looms to the west of Capitol Reef National Park. At roughly 11,000 feet, the mountain's 50,000 timbered acres cover half of the Aquarius Plateau (an uplift along the Colorado Plateau), making it the highest forested plateau in North America. Blue Bell Knoll, also known as Boulder Top by locals, is the highest peak on Boulder Mountain at 11,317 feet. As part of Dixie National Forest, Boulder Mountain has about 60 high-elevation fishable lakes. Boulder Mountain can be reached from Torrey, at the junction of Highway 24 and Scenic Byway 12.

Access To The Mountain

There are several mountain roads that provide access to many of Boulder Mountain's lakes. A few lakes are within hiking distance of the nearest roads. Four-wheel drive, high-clearance vehicles are recommended for tackling many of Boulder Mountain's scenic backcountry roads. Scenic Byway 12 crosses the high plateau of Boulder Mountain beginning in Torrey on the east. Check on road conditions at the ranger station in Loa prior to traveling.

Thousand Lake Mountain

Located in the easternmost section of Fishlake National Forest, Thousand Lake Mountain towers from 7,000 to 11,000 feet. The mountain's unique topography features exposed layers of red sandstone along the lower slopes, while alpine forests and open meadows define the upper slopes. Despite its name, Thousand Lake Mountain is known more for its craggy terrain than its lakes.

Scenic Drive

Thousand Lake Mountain Road is a 35-mile scenic backway that begins in Fremont and loops through the Cathedral Valley section of Capitol Reef National Park. The road climbs steep cliffs and towering rock formations, leading to stunning panoramic vistas. A high-clearance vehicle is recommended for the two hour drive along the mostly dirt and gravel but well-maintained road. Please check road conditions prior to travel along this route. Snow drifts have been known to still be present late into the warmer months.



EAST OF THE REEF

The Eastern High Desert zone includes unique desert landscapes. It's a place where dinosaurs once roamed, a place with terrain that is similar to the planet Mars or our very own moon. This region was once the hide-out for famous outlaws, and offers access to the western edge of Canyonlands National Park. Hollywood has recently used this region again as the back-drop for two exciting movies; Disney's John Carter of Mars and 127 Hours.

From here you'll also have access to the Henry Mountains with its large herd of free roaming buffalo, and Lake Powell with over 2,000 miles of shoreline. Visitors to the upper sections of Lake Powell and the eastern edge of Canyonlands National Park can use this region for lodging, dining and other services.

Mars Desert

The Mars Desert Research Station (MDRS) located near Hanksville is the second of four simulated Mars habitats in the world built and managed by the Mars Society. The area was chosen for field study research because of the terrain's noticeable similarities to Mars. Astronauts and research crews spend two weeks at a time living in the two-story, eight-meter cylindrical 'Habitat,' also known as the Hab. They are required to wear space

suits and carry walkie talkies whenever they step outside the Hab into the simulated Martian environment. The Hab is always manned with at least one crew member.

Swing Arm City

Located south of Factory Butte and west of Caineville, this diverse recreation area is designed for ATV and OHV vehicles. With varied terrain and a range of trails, this area is great for both beginners and experts alike.

OTHER LOCATIONS

Robbers Roost

Bandits Byway

When Butch Cassidy and his Wild Bunch needed a place to hide, Robbers Roost was their go-to spot. This remote area was the perfect outlaw hideout. Sisters Ann and Josie Bassett also visited this secluded location, providing food and horses to Butch Cassidy and his gang. The outlaws were sworn to secrecy and their hideout was never discovered by lawmen. The original Wild Bunch corral still stands in Robbers Roost.

127 Hours Backdrop

Today hikers, campers, horseback riders, off-roaders and canyoneers are attracted to the myriad of canyons and trails in Robbers Roost. In 2003, hiker Aaron Ralston rescued himself after being trapped for five days beneath an 800-pound boulder while exploring the canyons alone. His story was depicted in the movie “127 Hours.”



Lake Powell

To the southeast of Capitol Reef National Park is Lake Powell, which is one of the most unique national recreation areas in the United States.

Bird Watching Wonderland

Bicknell Bottoms

A 670-acre wildlife habitat located along the Fremont River, Bicknell Bottoms is about 3.5 miles southeast of the small town of Bicknell. The designated wildlife management area is particularly attractive to waterfowl and other birds. This spot is a bird watcher's paradise, with spring and fall migrations offering some of the best opportunities for sighting large flocks.

How to get there

To reach Bicknell Bottoms, take UT-24 southeast from Bicknell for 2.5 miles. Turn right (south) on Aquarius Plateau road, which crosses the Fremont River. Continue along this road for about a mile. This marshy section of land is owned by the Utah Division of Wildlife Resources and foot access is permitted. There is also access from Bicknell by traveling south on 400 West for two miles to the Fremont River.



Henry Mountains

The remote Henry Mountains comprise almost 700,000 acres of backcountry beauty, with an elevation range from 3,700 feet at the north shore of Lake Powell to over 11,600 feet at Mt. Ellen.

This rugged landscape offers an abundance of recreational opportunities such as hiking, off-roading, camping, wildlife viewing, nature studies, photography and hunting.

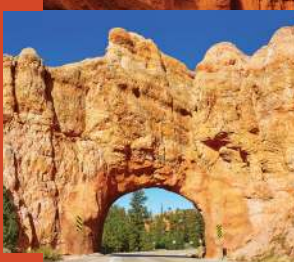
SCENIC BYWAY 12

Scenic Byway 12 is an All-American Road and is rated as one of America's top ten scenic byways. It spans a route of 124 miles, and travels through some of the most diverse, remote and ruggedly beautiful landscapes in the country. Scenic Byway 12 runs through Wayne County and neighboring Garfield County and is home to two national parks, three state parks, a national recreation area, a national monument, and a national forest.

Along the way you will also discover that Scenic Byway 12 takes you through memorable landscapes, ranging from the remains of ancient sea beds to one of the world's highest alpine forests, and from astonishing pink and russet stone turrets to open sagebrush flats. The history and culture of the area blend together, making Scenic Byway 12 a journey like no other.

Scenic Byway 12 Highlights

- 1 As it winds along the east flanks of Boulder Mountain, Scenic Byway 12 climbs to an altitude of more than 9,000 feet and affords breathtaking views of the rugged, rainbow-hued landscape stretching out below. Immediately surrounding the highway is a landscape of aspen, pine, spruce, and fir. Wildlife, including deer, elk, mountain lion, and numerous small mammal and bird species, thrive here.
- 2 The famous stretch of byway known as "The Hogback" clings to a thin razorback ridge of slickrock, as the terrain spills steeply off to each side toward winding creeks and canyons below. Driving here is slow and cautious, but the vistas are incredible.
- 3 Anasazi Indian Village State Park was one of the largest Anasazi communities in Utah west of the Colorado River. Part of the ancient village has been reconstructed and visitors can go inside the L-shaped abode, plus view thousands of artifacts which are on display in the park's museum.
- 4 Lower Calf Creek Falls is a premier stop along Scenic Byway 12 in the Grand Staircase-Escalante National Monument. This desert oasis is an almost 6-mile moderately strenuous round-trip hike to a stunning 126-foot waterfall.
- 5 Bryce Canyon National Park is actually not a canyon, but a series of amphitheaters. Many of the multicolor hoodoos, pinnacles, buttresses and columns are visible from the 37-mile round-trip scenic drive through the park, which offers numerous viewpoints, photographic opportunities and access to hiking trails.
- 6 Red Canyon's most immediately striking natural feature is its variety of weirdly sculpted erosional forms variously described as turrets, hoodoos, pinnacles, or spires. These geologic features extend along the byway for almost four miles.



ACTIVITIES

Hiking/Backpacking

Mountain Trails

Boulder Mountain is a broad, flat-topped plateau of mostly wide open alpine meadows and a few scattered aspen groves. Dozens of small lakes dot the top of the mountain, including Blind Lake, Posey Lake and Cyclone Lake. Brown's Point and Choke Cherry Point at the top of the mountain offer splendid views of Capitol Reef and the Henry Mountains to the east. This area is only accessible from late spring to autumn.

Red Rock Paradise

Capitol Reef National Park is a day hiker's paradise. Most trails are relatively short and well developed, offering incredible scenery, while others offer a more challenging landscape.

The Capitol Gorge Trail

This trail is an easy walk along the bottom of a narrow, dry wash with towering walls.

The Golden Throne Trail

The Golden Throne Trail climbs from the canyon bottom to the base of the Golden Throne offering panoramic views.

The Hickman Bridge Trail

The Hickman Bridge Trail is a short nature walk that leads to a large natural bridge. Many others trails in the park offer similar experiences.

ATVs

The areas surrounding Capitol Reef National Park are home to hundreds of miles of off road routes ranging from relaxing drives to nail biting adventures. Thousand Lake Mountain to the north, Boulder Mountain to the south and the Henry Mountains south of the town of Hanksville provide spectacular alpine scenery, cool summer temperatures and panoramic views of the surrounding lowland deserts. The roads and trails in these higher elevations are only accessible from late spring through autumn. Off road travel is NOT allowed inside Capitol Reef National Park itself.





ACTIVITIES

Mountain Biking

The Capitol Reef area boasts a variety of mountain biking adventures. Though there are only about a dozen trails identified, these routes are highly rewarding in their scenic quality.

Capitol Reef Scenic Drive offers 19 miles of the best scenery of Capitol Reef National Park including the famous Grand Wash and Capitol Gorge.

The Cathedral Valley Trail provides 65 miles of extremely remote and seldom seen formations and vistas.

Velvet Ridge is a 14.3 mile out and back trail that clips the edge of the Torrey Breaks where a beautiful complex of canyons, cliffs, ledges, buttes and mesas wrap the shoulder of Thousand Lake Mountain.

Tantalus Flats Trail is a more strenuous ride beginning high on the flank of Boulder Mountain and descending 14 miles on a moderately technical double track into the contorted ridges and canyons of the Waterpocket Fold.

Off-Highway Vehicle Tours

Opportunities for off-highway vehicle touring experiences are particularly incredible in the Capitol Reef region. Back-country roads lead in all directions through diverse terrain and elevations. Choose from high desert terrain, red rock landscapes or mountains and forests. Check with federal agencies such as the BLM and Forest Service for specifics on back-country roads. As always, use great care and stay on the utilized roads except in areas designated for open use. Check out our scenic drives section to learn more about specific areas.

Fishing

Chasing Trout

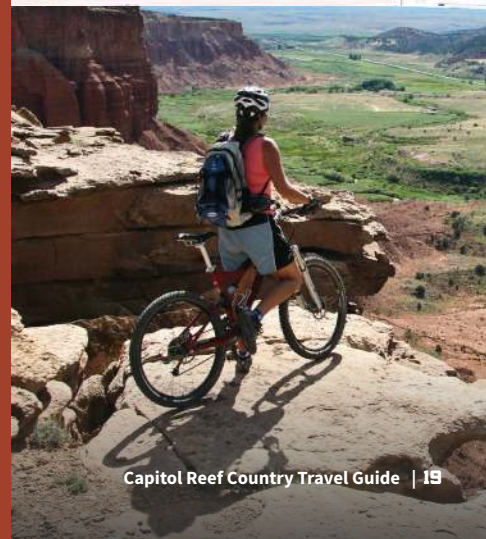
The many lakes on Boulder Mountain offer superb fishing for Brook and Rainbow trout. Many of the lakes, including Posey Lake and Cyclone Lake, are stocked annually. These lakes are at high altitude therefore the season is short, with the best fishing in the fall.

Fly Fishing Fantasy

If you like fly fishing, the Fremont River is the place to go. The upper and lower sections are famous for their large, catchable browns and hearty rainbows. Below the town of Torrey, the river turns muddy and becomes unfishable.

Wildlife Wilderness

Located south and west of Hanksville, the Henry Mountains are home to some of the finest Mule Deer Bucks that have been taken in the Western United States. Each year, thousands of hunters put in for tags, but only a few are successful in obtaining one. Boulder Mountain and Thousand Lake Mountain are also home to many healthy herds of elk.



ACTIVITIES

Canyoneering

Both the San Rafael Swell and the Robbers Roost area offer world class slot canyon hiking and canyoneering.

Little Wild Horse Canyon

Just seven miles from Goblin Valley State Park in the southern part of the San Rafael Swell, is a classic slot canyon experience for the novice hiker. This hike is not difficult, yet it is considered one of the best slots in the world.

Muddy Creek

For the more adventurous soul, the Muddy Creek carves its way through the San Rafael Swell offering two to three days of wading down a slow moving stream amid towering walls only a few meters apart.

Robbers Roost

The Robbers Roost area is home to a few of the best technical slot canyons on the Colorado Plateau, including Maidenwater Canyon, North Fork of Robbers' Roost and Sandthrax Canyon. These canyons are only for experienced canyoneers with the appropriate equipment and experience.

Stargazing

Because of its commitment to reducing light pollution and educating the public about the night skies, Capitol Reef National Park is designated a "Gold Tier International Dark Sky Park" by the International Dark Sky Association, signifying the highest quality night skies. The park is an ideal location for stargazing, as it has recently made improvements to increase "night-friendly" lighting.

WildLife

Capitol Reef Country contains spectacular wildlife, including Black Bears, The Kangaroo Rat, Marmots, Pronghorn Antelope, The Pinyon Jay bird and so much more. These fascinating creatures make incredible photo ops.

Horseback Riding

Riders will enjoy a variety of scenery including high alpine lakes and forests, historical and archeological sites and the feeling of the old west while riding the dusty desert trails. Most of the area is open to pack animals, but their use is mostly limited by the availability of water.

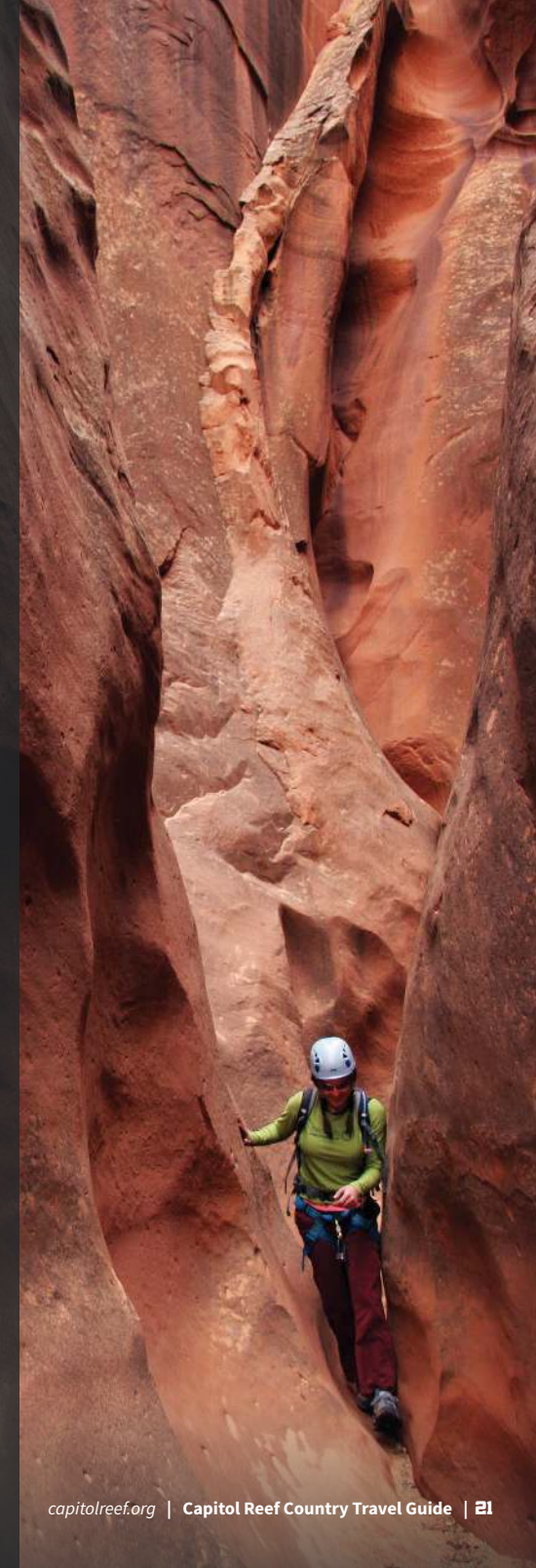
Boulder Mountain and Thousand Lake Mountain offer a variety of trails that reward the rider with outstanding views of the surrounding desert while traveling amongst pine and aspen forests, peaceful lakes and broad open meadows.

Capitol Reef National Park allows equestrian activities but is somewhat limited; however, the surrounding BLM and Forest Service land is less restrictive. The park has no developed overnight facilities for stock users, with the exception of the Equestrian Staging Area in the Waterpocket District. The availability of water is a limiting factor in the use of horses and pack animals. Please talk with a ranger at the visitor center for information.

The desert areas of Robbers Roost and the San Rafael Swell are dissected by numerous trails that are reminiscent of the classic Western movies. Broad sage brush plains are interrupted with imposing sandstone towers and deep canyons. Before riding be sure to educate yourself on feed restrictions and trail etiquette.

For more information:

<http://capitolreef.org/horseback.html>



SERVICES

HOTELS

Bicknell

Aquarius Motel
292 West Main
800-833-5379
aquariusinn.com
Units 29 | 📶 | 🐾 | 🛁 | 🍷 |

Sunglow Motel
91 East Main
435-425-3701
sunglowmotel.com
Units 10 | 📶 | 🐾 | 🍷 |

Caineville

Cathedral Valley Inn
25 East Highway 24
435-456-9900
cathedralvalleyinn.com
Units 16 | 📶 | 🐾 | 🛁 |

Hanksville

Whispering Sands Motel
90 South Highway
435-542-3238
whisperingsandsmotel.com
Units 23 | 📶 |

Loa

The Snuggle Inn
55 South Main
435-836-2898
thesnuggleinn.com
Units 15 | 📶 |

BED & BREAKFASTS

Torrey

Skyridge Inn B&B
1012 East Highway 24
435-425-3222
skyridgeinn.com
Units 6 | 📶 |

Torrey

Austin's Chuckwagon Lodge
12 West Main
435-425-3335
austinschuckwagonmotel.com
Units 24 | 📶 | 🐾 |

Broken Spur Inn
955 East SR 24
435-425-3775
brokenspurinn.com
Units 60 | 📶 | 🛁 | 🍷 |

Capitol Reef Inn

360 West Main
435-425-3271
capitolreefenn.com
Units 8 | 📶 | 🐾 |

Capitol Reef Resort

2600 East Highway 24
435-425-3761
capitolreefresort.com
Units 150 | 📶 | 🛁 | 🍷 |

Days Inn

825 East Highway 24
435-425-3113
daysinncapitolreef.com
Units 39 | 📶 | 🛁 |

Torrey Schoolhouse B&B Inn

150 North Center Street
435-491-0230
torreyschoolhouse.com
Units 10 | 📶 |

LODGES & CASITAS

Teasdale

Lodge at Red River Ranch
2900 West Highway 24
435-425-3322
redriverranch.com
Units 15 | 📶 |

Torrey

Cougar Ridge Casitas
560 East Cougar Ridge Road
435-680-9170
cougarridgelodge.com
Units 14 | 📶 | 🐾 |

Flute Shop Motel
1705 South SR 12
435-425-3144
fluteshopmotel.com
Units 4 | 📶 | 🐾 |

Motel Torrey
415 West Main
435-425-3800
moteltorrey.com
Units 11 | 📶 | 🐾 |

The Noor Hotel
877 North Highway
435-425-2525
thenoorhotel.com
Units 40 | 📶 | 🐾 |

Red Sands Hotel
670 East SR 24
435-425-3688
redsandshotel.com
Units 64 | 📶 | 🐾 | 🛁 | 🍷 |

Rim Rock Inn
2523 East SR 24
435-425-3398
therimrock.net
Units 19 | 📶 | 🐾 | 🍷 |

Cougar Ridge Lodge
560 East Cougar Ridge Road
435-680-9170
cougarridgelodge.com
Units 4 | 📶 |

📶 Wireless | 🐾 Pet Friendly | 🏊 Swimming Pool | 🍴 Restaurant on Site

CABINS

Grover

Uncle Earl's Cabins
250 East Harmony Lane
801-637-2559
uncleearlscabins.com
Units 2 | 📶 | AC/Heat |

Lyman

The Mill Cabins
1475 South Highway 24
435-491-0426
themillcabins.com
Units 7 | 📶 | Heat | 📺 |

Teasdale

Pine Shadow Cabins
195 West 125 South
800-708-1223
pineshadowcabins.net
Units 6 | 📶 | AC/Heat |

Torrey

Cowboy Homestead Cabins
2345 Cowboy Road
435-425-3414
cowboyhomesteadcabins.com
Units 4 | 📶 | AC/Heat |

Torrey Trading Post & Cabins
25 West Main
435-425-3716
torreytradingpost.com
Units 4 | 📶 | 🐾 | AC/Heat |

RESTAURANTS

Bicknell

Sunglow Family Restaurant
91 East Main
435-425-3701
Family Restaurant

Bhinda's Curry Pizza Palace
125 North SR 24
435-425-2500
Pizza

Reel Bites
11 East Main
435-425-3493
Café

The Sweetgrass
109 West Main
435-425-3599
Coffee Shop

Hanksville

Duke's Slick Rock Grill
275 East Highway 24
435-542-2052
Restaurant Beer/Wine

Outlaw Roost
20 North Highway 95
435-542-1763
Mexican, Beer/Wine/ Spirits

Stan's Burger Shak
160 South SR 95
435-542-3330
Fast Food

Loa

Double Decker
195 East 300 South
435-836-3334
Fast Food

Marinia's Country Café
289 North Main
435-836-2047
Café

Torrey Austin's Chuckwagon Deli
12 West Main Torrey
435-425-3290
Deli

Broken Spur Steakhouse
955 East SR 24
435-425-3775
Casual Fine Dining, Beer/Wine

Capitol Burger Food Truck
435-425-0742
Fast Food

Chak Balam
12 North Sand Creek
435-425-2877
Mexican, Beer

Dark Sky Coffee
178 East Main
435-425-2553
Coffee

Hunt & Gather
599 West Main
435-425-3070
Casual Fine Dining, Beer/Wine/Spirits

La Cueva
875 North SR 24
435-425-2000
Mexican, Beer/Wine/ Spirits

Pioneer Kitchen
2600 East Highway 24
435-425-3323
Restaurant

Rim Rock Patio
2523 East Hwy. 24
435-425-3389
Pizza

The Rim Rock Restaurant
2523 East Highway 24
435-425-3388
Casual Fine Dining, Beer/Wine/Spirits

Rock Garden Eatery
670 East SR 24
435-425-2360
Restaurant

Slacker's Burger Joint
165 East Main
435-425-3710
Fast Food

Subway Sandwiches
675 East Hwy 24
435-425-3302
Fast Food

Torrey Grill & BBQ
1110 West SR 24
435-609-6997
BBQ

The Wild Rabbit Café
135 East Main
435-425-3074
Café

Wingstrand's
677 East Highway 24
435-425-2479
Fast Food

Slacker's Pizza and Deli
156 East Main
435-425-3797
Pizza



SERVICES

RV PARKS & CAMPGROUNDS

Caineville

Sleepy Hollow Campground

3000 South SR 24
435-456-9100
12 Sites | 🐾 | ⬆️ | 📶

Hanksville

Duke's SlickRock RV

275 East Highway 24
435-542-3235
32 Sites | 🐾 | ⬆️ | 📶 | 🏠

LOA

Fremont River RV Park

275 East Highway 24
435-542-3235
dukesslickrock.com
24 Sites | 🐾 | ⬆️ | 📶

Torrey

Sand Creek RV Park & Campground

540 West Highway 24
435-425-3577
sandcreekrv.com
15 Sites | 🐾 | ⬆️ | 📶 | 🏠

Thousand Lakes RV Park & Campground

1110 West Highway 24
435-425-3500
thousandlakesrvpark.com
59 Sites | 🐾 | ⬆️ | 📶 | 🏠 | 🌊

Wonderland RV Park

44 South SR 12
877-954-0184
435-425-3665
36 Sites | 🐾 | ⬆️ | 📶 | 🏠

GUIDES & OUTFITTERS

Hanksville

Get in the Wild

PO Box 29 Hanksville
818-381-9453
getinthewild.com
| 🏠 |

LOA

The Quiet Fly Fisher Guide Service

17 East 200 North
435-616-2319
quietflyfisher.com
| 🎣 |

Fremont

TK Outfitting

1689 East Tidwell Road
435-749-2110
tkoutfitting.com
| 🐾 |

TEASDALE

Capitol Reef Adventure Company

435-491-0451
capitolreefadventurecompany.com
| 🏠 |

Torrey

Backcountry Safaris

307-413-9300
backcountrysafaris.com
| 🏠 |

Redrock Adventure Guides

241 East 100 North Torrey
435-425-3339
redrockadventureguides.com

Sleeping Rainbow Adventures

435-893-3039
sradventures.com
| 🏠 |

Wilderness Ridge Adventures

2600 East Highway 24
435-225-6205
wildernessridgeadventures.com
| 🐾 |

Wilderness Ridge Trail Llamas

2600 East Highway 24
435-225-6205
wildernessridgetrailllamas.com
| 🏠 |

- 📶 Wireless
- 🐾 Pet Friendly
- 🏊 Swimming Pool
- ⬆️ Tent
- 🏠 Cabin
- 🐎 Horse
- 🎣 Fishing
- 🚶 Hiking
- 🚙 Jeep

Temperatures in Capitol Reef Country

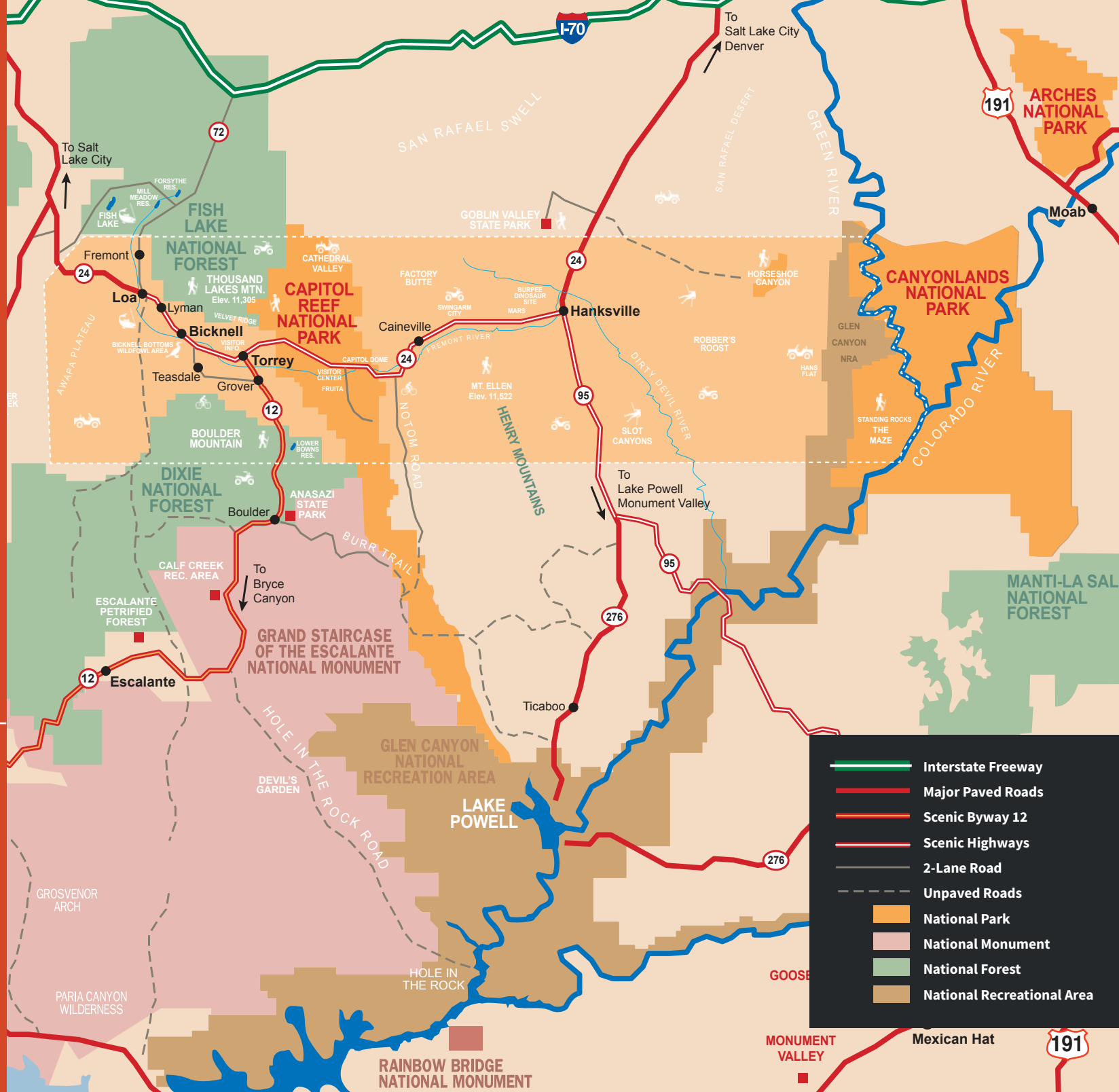
MONTH	AVERAGE HIGH (F)	AVERAGE LOW (F)
January	39	17
February	46	24
March	56	31
April	66	38
May	76	47
June	86	56
July	91	62
August	88	61
September	80	53
October	67	43
November	51	29
December	40	20

Elevations in Capitol Reef Country

CITY/TOWN	ELEVATION
Bicknell	7,200 Ft
Caineville	4,608 Ft
Capitol Reef NP	5,400 Ft
Fremont	7,200 Ft
Grover	7,116 Ft
Hanksville	4,300 Ft
Loa	7,045 Ft
Lyman	7,300 Ft
Notom	5,236 Ft
Teasdale	7,000 Ft
Torrey	6,800 Ft

Capitol Reef Country is easily accessible from major gateway cities such as Salt Lake City, Denver, and Las Vegas. Unpack once and venture out in all directions from any of our communities.

This region is conveniently situated between world-class attractions such as Bryce Canyon National Park, the Grand Staircase - Escalante National Monument, Lake Powell and Arches National Park. Interstate 15 and Interstate 70 both provide easy access to this region.



Wayne County Travel Council
P.O. Box 7
Teasdale, UT 84773

PRSRT STD
POSTAGE & FEES PAID
WAYNE CO. OFFICE OF TOURISM
PERMIT NO. 121



LIFE
UTAH
ELEVATED