

PLEASANT CREEK TRAIL

Explore the Slot Canyons of Capitol Reef National Park



LOCATION

This trail is located off Notom Rd. 6 mi. south of Hwy 24.

TRAIL TYPE

This trail is for hiking only.

DISTANCE

The total distance for this trail is 7.6 miles. This includes hiking in and back out.

DIFFICULTY

Easy. There are some stream crossings that make this trail a little more challenging in some parts, but definitely easier than the other slot canyons.

TRAIL DESCRIPTION

This trail will have you jumping from rock to rock or wading through calf-deep streams.

EQUIPMENT

This trail is for hikers only. Make sure you are prepared with the proper equipment.

ENVIRONMENT

Although this trail is beautiful all year round, the best times to hike it are in the late spring, summer or early fall.

SAFETY

Make sure to check the weather reports before starting this trail, as rain will cause this trail to be more difficult and dangerous.



TAKE IN THE VIEWS.

Like Burro Wash, Pleasant Creek has its own array of white stone. It is unique though, because of the mixture of Red Rock and the Navajo Sandstone. This mixture of red and white creates a beautiful view for any traveler.

GET A CLOSER LOOK.

The cottonwood trees that line the creek bed will provide a beautiful accent to the meandering trail and white sandstone formations. Along the way you will have opportunities to leave the trail and ascend the rock slopes on either side of the creek. These elevated areas will provide long views in all directions.



Trail tip: It would be very handy to have a walking stick especially when you are going through the stream crossings. A walking stick will help with balance and help you keep your footing.

If you have any further questions, please contact us at:

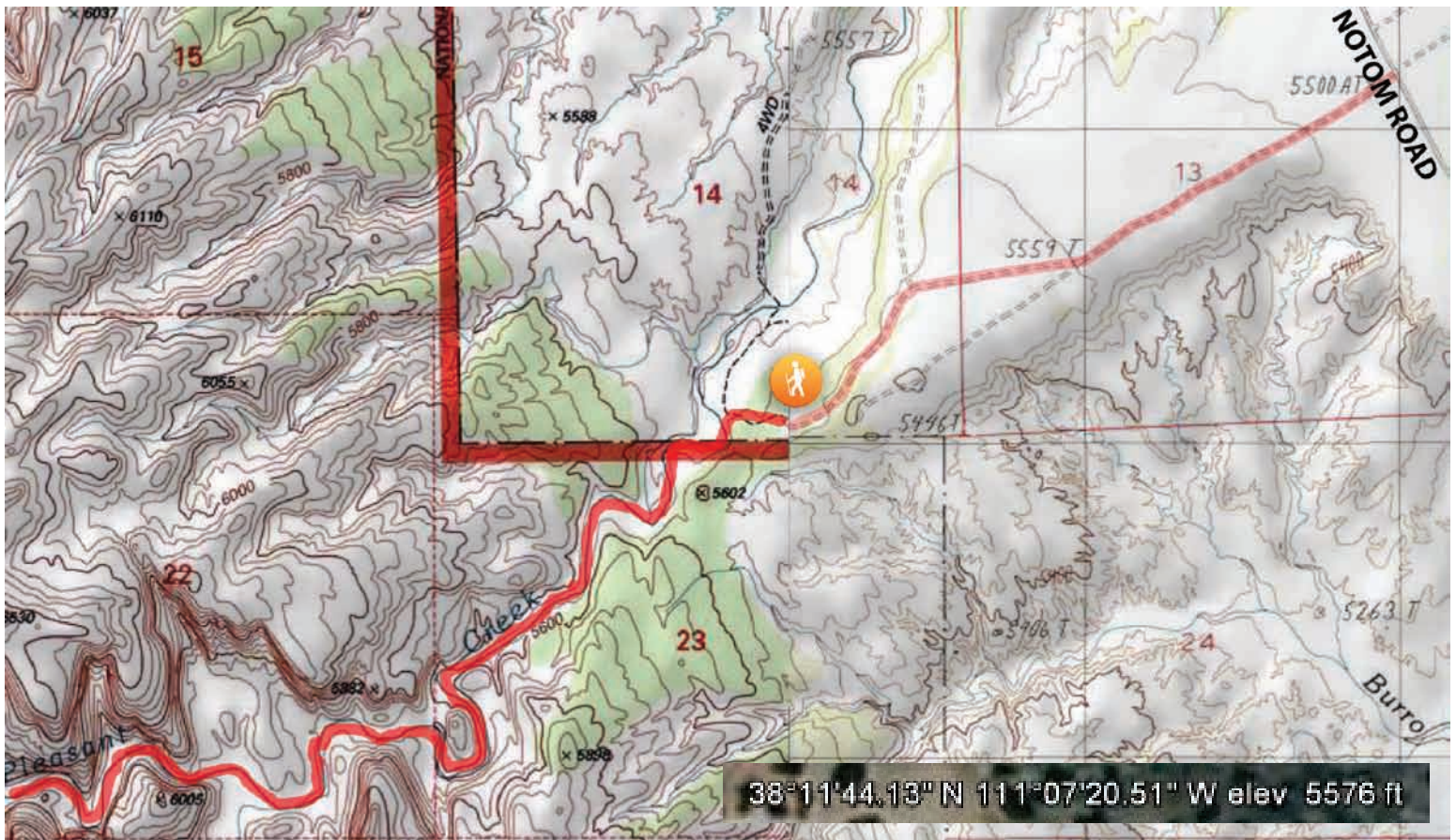
1-435-425-3365
info@capitolreef.travel

www.capitolreef.org

DO IT AT YOUR OWN PACE.

There are ample opportunities to venture into alcoves, slot canyons, or narrow side canyons.





TRAIL INSTRUCTIONS

Access this trail by departing the Notom Road and following a good dirt road to the west. Follow this road about 1.5 miles to a fork and stay right and follow it down the hill to near the creek. Begin your trek upstream by following along the creek. Note that if you travel the full length of this trail through the park you will cross the creek at least 16 times (depending on water levels). Pick the distance that you would like to travel up the creek keeping in mind that you will walk back the way you've come. The cottonwood trees and foliage are beautiful in the spring, summer and fall. Winter time travel in this area will find ice covering the stream in places (depending on weather).