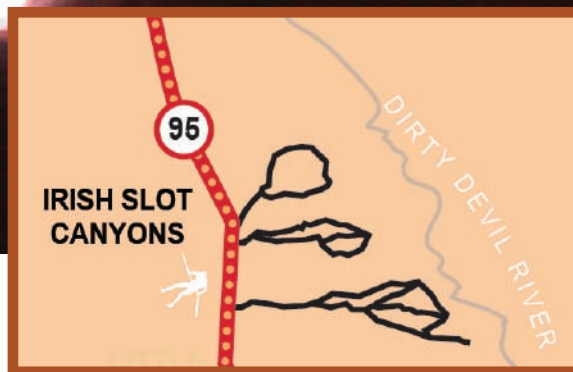


LEPRECHAUN TRAIL

Explore the Irish Slot Canyons



LOCATION

This trail is located 26 miles south of Hanksville just off Hwy 95.

TRAIL TYPE

This trail is for hiking. There are parts of the slot canyon where you can go rappelling and climbing.

DISTANCE

There are different routes that you can take through the slot so just plan on taking 6-8 hours.

DIFFICULTY

This trail depending on the route you take can be moderate to difficult.

TRAIL DESCRIPTION

Most of this trail is more difficult to negotiate and takes time to do so. Being in a large group will slow you down. Smaller groups of 4-6 people would be best.

EQUIPMENT

This trail requires complete hiking and climbing technical gear complete the entire hike.

ENVIRONMENT

You will normally have to wade through several washes that are waist deep.

SAFETY

Make sure that you are descending into the right place as they all look similar, some have no escape.



TAKE IN THE VIEWS.

The sunlight as it breaks through the slot to light your trail is unlike anything you have ever seen before. The narrow beautiful red rock seems to light on fire as the rays hit the walls. It is breathtaking and brings a mysterious feel to the slot.

GET A CLOSER LOOK.

The narrows in this trail are extremely tight and dramatic. You will find yourself squeezing through different parts and helping others get over different parts of the trail. The whole trail is an adventure and you never know what you are going to run into!



DO IT AT YOUR OWN PACE.

This trail offers several different routes so whether you are a beginner or more experienced, this trail offers the adventure you are looking for.

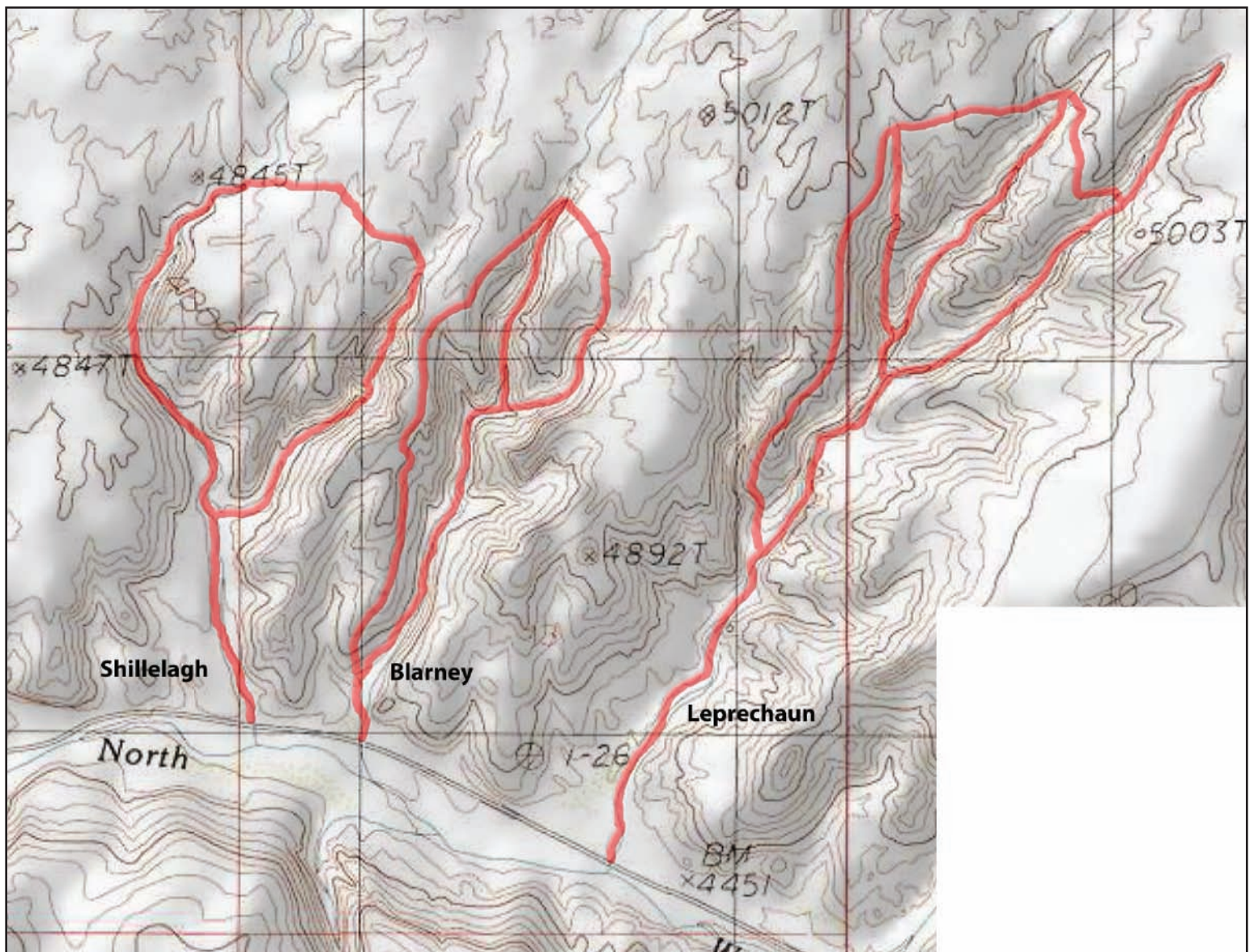
Trail tip: To complete this trail, rock climbing skills would be more than beneficial. Also, make sure you have shoes with really good grip.

If you have any further questions, please contact us at:

1-435-425-3365
info@capitolreef.travel

www.capitolreef.org





Trailhead coordinates: 38.018818,-110.536945