

# GREAT WESTERN TRAIL

Discover the Simple Beauty of the GWT.



## LOCATION

The main staging area for this trail is on the outskirts of Bicknell off Highway 24. You can stage at several different areas, as shown on the map.



## TRAIL TYPE

ATV/Bike/Horse. You can do a loop, go back the way you came, or continue on to Dark Valley.

## DISTANCE

The distance from the Velvet Ridges Staging area to the Aquarius Ranger Station is 10 miles.

## DIFFICULTY

Moderate. The lower three miles of the trail are difficult and rough.

## TRAIL DESCRIPTION

Government Creek, Pine Creek, and Bullberry stream crossings. If you are biking, some parts are sandy, but it is not enough to cause the trail to become too difficult to ride.

## EQUIPMENT

This trail is designed for ATV, bicycle, and horse.

## ENVIRONMENT

Even though this trail is maintained well, it is still wise to be aware of any potential problems that could arise due to bad weather.

## SAFETY

Stay alert and aware of other people along the trail. Be respectful of other travelers and try to be cautious of them at all times.





## DO IT AT YOUR OWN PAGE.

This trail can be done by ATV, bike, or horse. It also connects to the Dark Valley Trailhead, so you have the option of just staying on the Great Western Trail, or continuing on to do Dark Valley. There are restroom facilities at the Ranger Station, where you can also make reservations to camp. Other than that, there is dispersed camping only.

## GET A CLOSER LOOK.

This trail provides many opportunities to see different types of wildlife. Elk, deer, antelope, and on occasion, bears have been seen on the trail. To the North, views of Thousand Lakes Mountain and the Valley and to the west is Parker Mountain.



## TAKE IN THE VIEWS.



**Trail tip:** If you want to camp over night where there are facilities, be sure to make reservations at the Aquarius Ranger Station in advance.

If you have any further questions, please contact us at:

1-435-425-3365  
info@capitolreef.travel

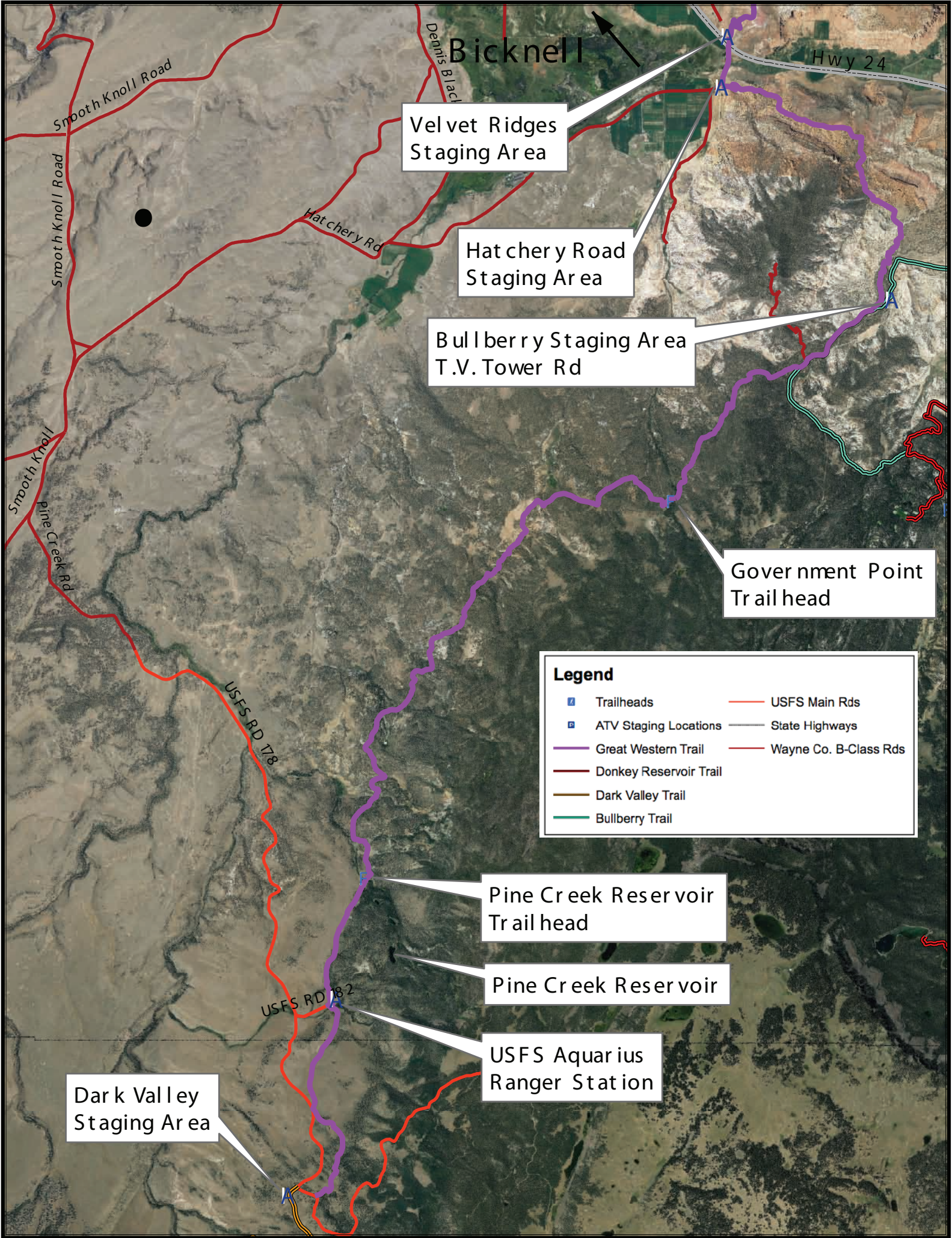
[www.capitolreef.org](http://www.capitolreef.org)

### Points of Interest:

Velvet Ridges Staging Area: N 38d18'37" W 111d31'04"  
Hatchery Road Staging Area: N 38d18'16" W 111d31'07"  
Bullberry Staging Area: N 38d16'45" W 111d29'34"  
Pine Creek Reservoir Trailhead: N 38d12'35" W 111d34'14" USFS  
Aquarius Ranger Station: N 38d11'43" W 111d34'34"  
Pine Creek Reservoir: N 38d12'05" W 111d34'04"  
Dark Valley Staging Area: N 38d10'20" W 111d34'59"







Bicknell

Velvet Ridges  
Staging Area

Hat chery Road  
Staging Ar ea

Bullberry Staging Ar ea  
T.V. Tower Rd

Government Point  
Trail head

**Legend**

- |                        |                       |
|------------------------|-----------------------|
| Trailheads             | USFS Main Rds         |
| ATV Staging Locations  | State Highways        |
| Great Western Trail    | Wayne Co. B-Class Rds |
| Donkey Reservoir Trail |                       |
| Dark Valley Trail      |                       |
| Bullberry Trail        |                       |

Pine Creek Reservoir  
Trail head

Pine Creek Reservoir

USFS Aquarius  
Ranger Station

Dark Valley  
Staging Ar ea