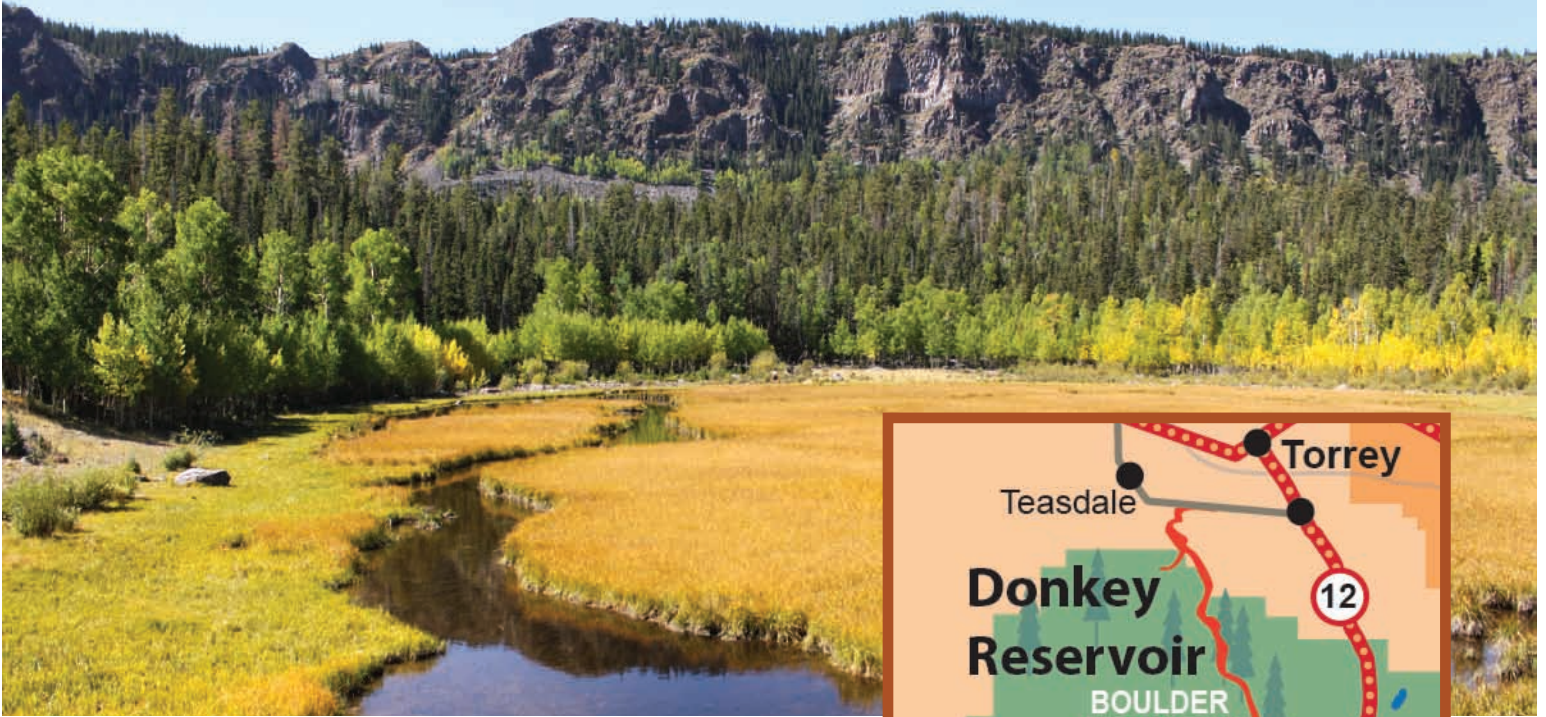


DONKEY RESERVOIR



Ride to the Most Beautiful part of Boulder Mountain.



LOCATION

Both staging areas are located just off Teasdale Rd. on the Bullberry Rd and the Donkey Reservoir Rd.

TRAIL TYPE

ATV and OHV. The trail is well marked and usually maintained by the state of Utah.

DISTANCE

Staging area to Donkey Reservoir is 6.8 miles.

DIFFICULTY

Moderate-Difficult. Weather conditions can change rapidly causing parts of the road to become challenging and difficult for even the best ATV riders.

TRAIL DESCRIPTION

For the most part this trail is a maintained trail. Mostly it consists of dirt with a few rocky parts.



EQUIPMENT

This loop was designed for an ATV or a OHV only.

ENVIRONMENT

Some areas of the trail can be washed out due to weather. Be sure to be aware of the conditions before starting out.

SAFETY

Make sure you have all the gear and equipment that you will need. Wear a helmet and other protective gear to protect yourself.

Map on other side.



DO IT AT YOUR OWN PACE.

The following coordinates will give you a head start on taking time to explore some part of the area.

Donkey Reservoir Rd Staging Area: N 38d15'58" W 111d28'32"

Bullberry/Donkey Res.Trail Intersection: N 38d15'39" W 111d29'25"

Teasdale Staging Area: N 38d16'59" W 111d28'39"

Bullberry Staging Area: N 38d16'45" W 111d29'34"

Bullberry Trail/Aquarius GWT Intersection: N 38d16'16" W 111d30'25"

Coleman Reservoir Rd: N 38d15'28" W

Donkey Reservoir: N 38d12'12" W 111d29'15"

GET A CLOSER LOOK.

On this trail, you will see the largest Ponderosa pine that has been discovered in the Dixie National Forest. This natural land mark and others add to the appeal and beauty of this trail. Take sometime to get off the ATV and experience the beauty first hand.



TAKE IN THE VIEWS.



There are several places to stop and take in the incredible views

This trail has absolutely incredible views. Be sure to take the time to ride into Coleman Reservoir, Round Lake, Donkey, and Left Hand Reservoir.

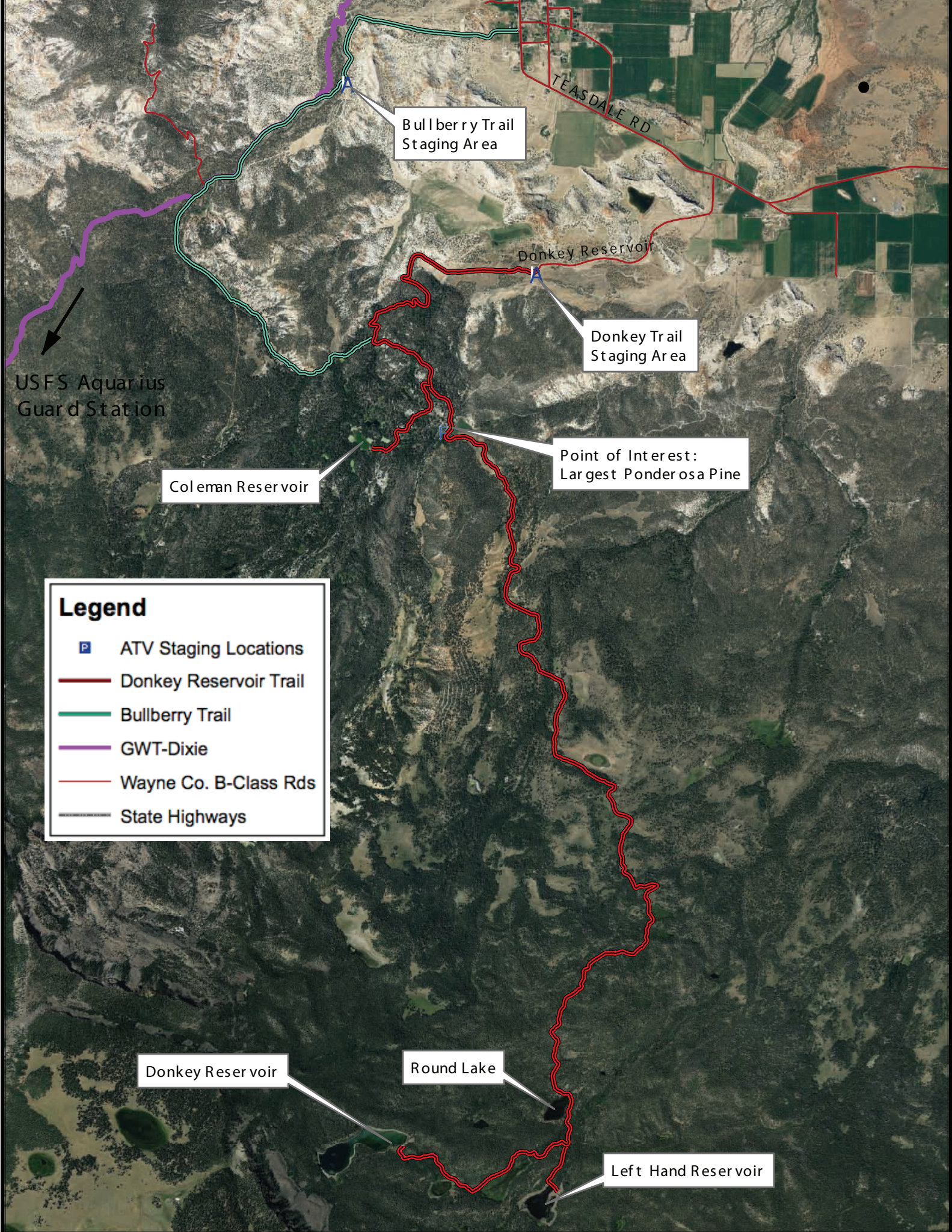
Trail tip: There is dispersed camping areas along the trail. All of these campgrounds are very limited and have no services. Be sure to take all your equipment up if you plan to camp.

If you have any further questions, please contact us at:

1-435-425-3365
info@capitolreef.travel

www.capitolreef.org





Bullberry Trail Staging Area

TEASDALE RD

Donkey Reservoir







Donkey Trail Staging Area

USFS Aquarius Guard Station

Coleman Reservoir

Point of Interest: Largest Ponderosa Pine

Legend

-  ATV Staging Locations
-  Donkey Reservoir Trail
-  Bullberry Trail
-  GWT-Dixie
-  Wayne Co. B-Class Rds
-  State Highways

Donkey Reservoir

Round Lake

Left Hand Reservoir