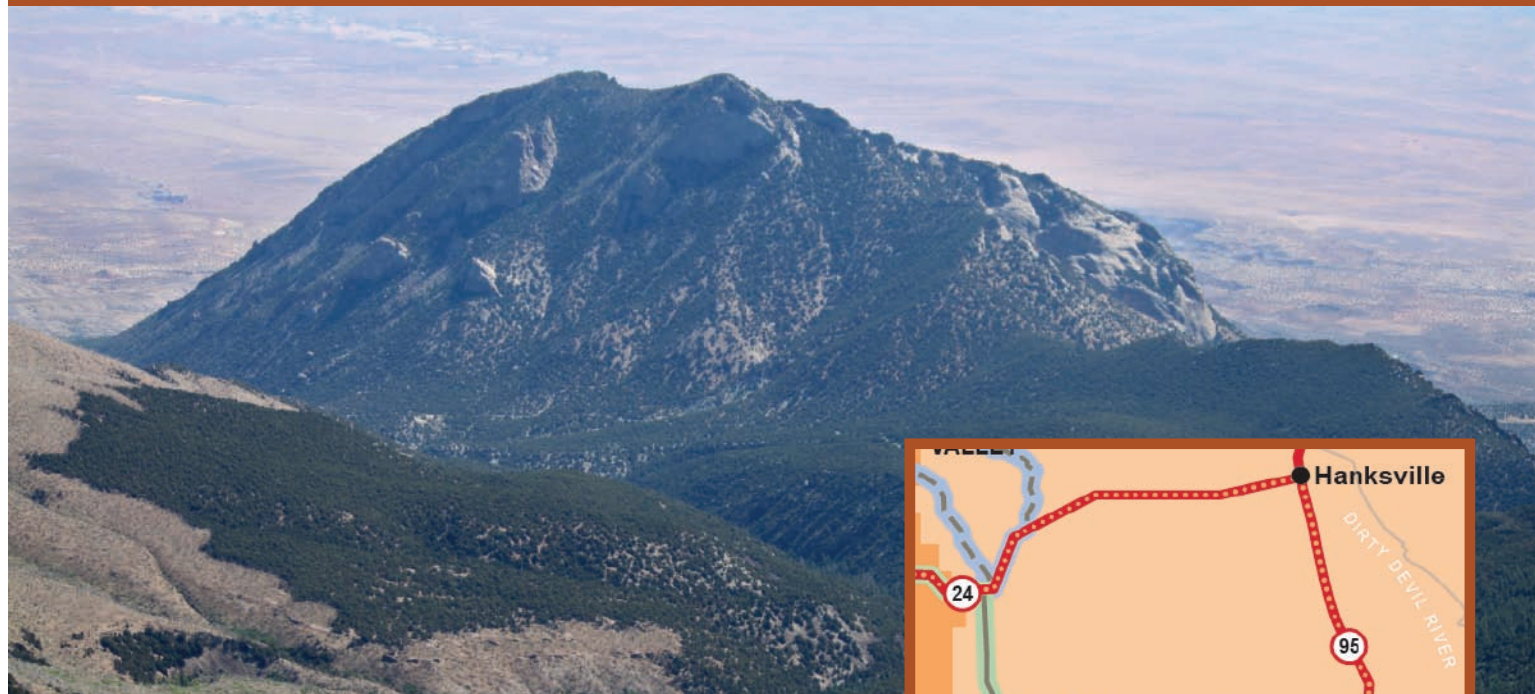


# BULL CREEK PASS

View Southern Utah's Rugged Landscape From 10,000 Feet



## LOCATION

20 miles south of Hanksville. Bull Creek Pass circles west of the UT 95 and UT 276.

## TRAIL TYPE

Bull Creek Pass is a SELF-GUIDED auto tour. There are hiking trails along the road. The lower parts of the pass are open all year.

## DISTANCE

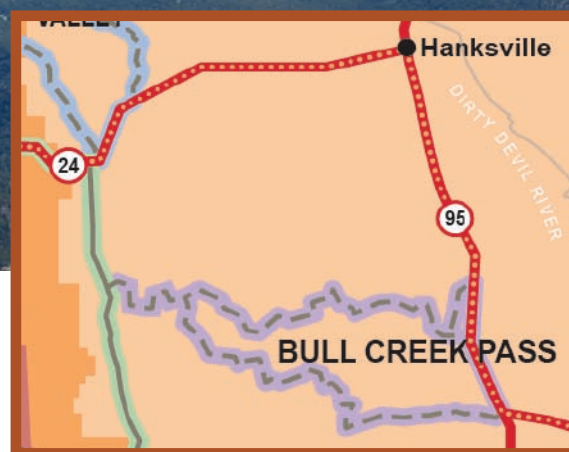
The loop is 68 miles long. The pass could take anywhere from 6-8 hours, depending on how often and for how long you stop.

## DIFFICULTY

Moderate. This varies depending on the weather. Make sure you are aware of previous and upcoming weather conditions.

## TRAIL DESCRIPTION

Bull Creek Pass takes you up and through the Henry Mountains. Even though the road can be small in parts, make sure you stay on the designated path so you do not destroy the wildlife.



## EQUIPMENT

This loop was designed for 4WD vehicles only. Some parts are more easily accessed with smaller vehicles.

## ENVIRONMENT

The trail can be washed out after a heavy rain. The higher parts of the pass are closed from November to June.

## SAFETY

If you run into problems, help may not be able to arrive for days so make sure you are prepared with enough food, water and clothing.



## TAKE IN THE VIEWS.

Southern Utah's Henry Mountain Range was the last of the continental United States' mountains to be explored..

The Bull Creek Pass takes you to the top of the Henry Mountains where you can see the very views that define southern Utah.

## GET A CLOSER LOOK.

Bull Creek Pass is lined with several places to park and go for a short hike. Pay attention to the road markers that will point to these spots. Some great points of interest are: Little Egypt, Eagle City, McMillan Springs, The Horn and Ragged Mountain, Trachyte Ridge Vista, and the Trachyte Ranch.



**Trail tip:** Make sure someone knows your plans just in case you run into trouble. They will know to send help if you do not return in an expected amount of time.

If you have any further questions, please contact us at:

1-435-425-3365  
info@capitolreef.travel

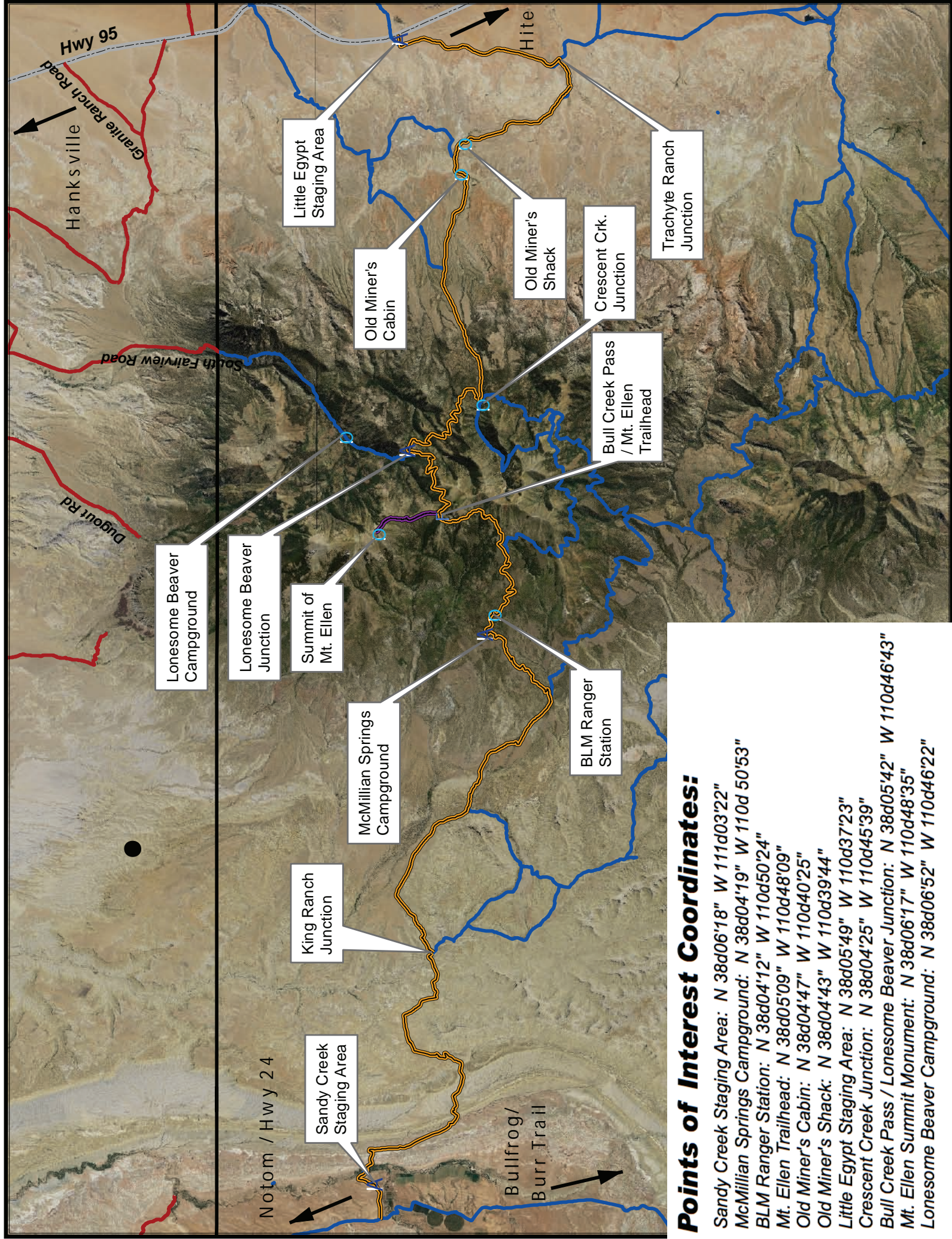
[www.capitolreef.org](http://www.capitolreef.org)

## DO IT AT YOUR OWN PAGE.

So much of it is still untouched, leaving a purity in the beauty that is seen here. The authenticity of its rich history remains including old gold mines to the hiding spots of the outlaws of the wild west. Take the time to explore the unique landscape and history of the area.







**Points of Interest Coordinates:**

- Sandy Creek Staging Area: N 38d06'18" W 111d03'22"
- McMillian Springs Campground: N 38d04'19" W 110d 50'53"
- BLM Ranger Station: N 38d04'12" W 110d50'24"
- Mt. Ellen Trailhead: N 38d05'09" W 110d48'09"
- Old Miner's Cabin: N 38d04'47" W 110d40'25"
- Old Miner's Shack: N 38d04'43" W 110d39'44"
- Little Egypt Staging Area: N 38d05'49" W 110d37'23"
- Crescent Creek Junction: N 38d04'25" W 110d45'39"
- Bull Creek Pass / Lonesome Beaver Junction: N 38d05'42" W 110d46'43"
- Mt. Ellen Summit Monument: N 38d06'17" W 110d48'35"
- Lonesome Beaver Campground: N 38d06'52" W 110d46'22"