

LOWER BOWNS/OAK CREEK TRAIL



Discover the Beauty Behind Scenic Byway 12.



LOCATION

This trail is located just off Scenic Byway 12 between the Lower Bowns and Oak Creek Reservoirs.

TRAIL TYPE

All motorized vehicles and bicycle. No loop, just different trails to explore.

DISTANCE

There is not a total specific distance for this trail but the distances for individual ones are on the next page.

DIFFICULTY

Moderate. There is rough terrain on the way to Oak Creek Reservoir, weather may create other challenges, that will make the trail more difficult.

TRAIL DESCRIPTION

Elevations: Rosebud Trail Head: 8,600, Lower Bowns Reservoir: 7,400, Oak Creek Reservoir: 10,100



EQUIPMENT

This trail has been designed for ATV, Jeep, 4WD, truck, or bicycle. Some areas are for non-motorized only.

ENVIRONMENT

This trail is only open from May to October, weather permitting in the early and later months.

SAFETY

Pay attention to the trail markers because some areas are restricted to motorized vehicles. Follow the rules of the trail and keep everyone safe.



DO IT AT YOUR OWN PAGE.

There are camping facilities at Oak Creek, Rosebud, Pleasant Creek, and Lower Bowns. All the campgrounds are really nice and well kept. The Rosebud Campground considered mostly an ATV campground, other than that, they are open to everyone. Take a few days and enjoy the beauty of the area.

GET A CLOSER LOOK.

- 2.1 Miles - Rosebud ATV Trailhead to Slickrock ATV Trail Junction
- 3.7 Miles - Rosebud ATV Trailhead to USFS Road 168
- 4.0 Miles - Rosebud ATV Trailhead to Lower Bowns Reservoir Trails
- 1.7 Miles - USFS Road 169 to Sawmill Bench Trail
- 2.5 Miles - Highway 12 to Oak Creek Reservoir



TAKE IN THE VIEWS.



Trail tip: If you are planning to camp or picnic along the trail, be sure to take out everything that you take in, including garbage. Pack your food in a place and a way so as not to attract unwanted wildlife.

If you have any further questions, please contact us at:

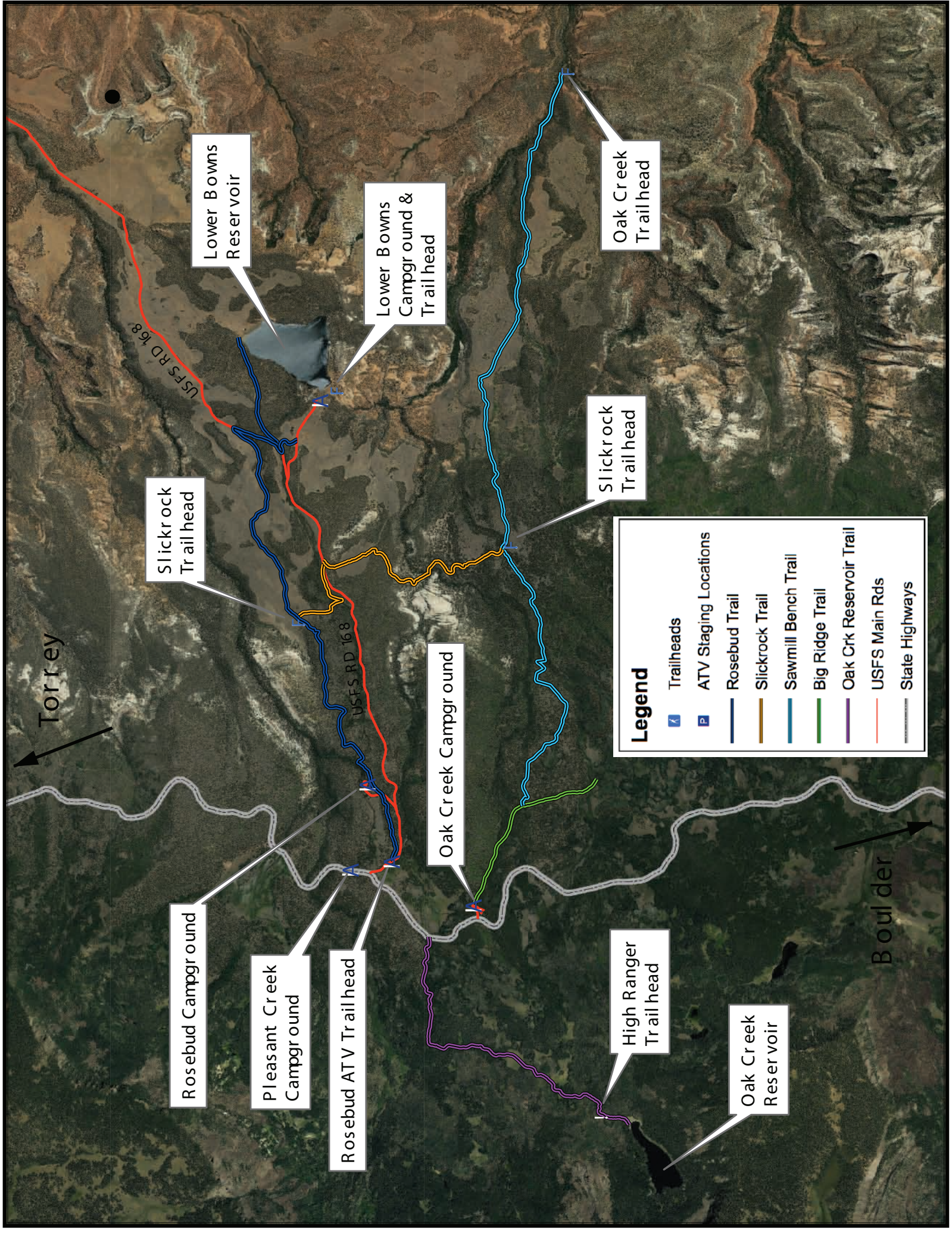
1-435-425-3365
info@capitolreef.travel

www.capitolreef.org

Points of Interest:

- Oak Creek Reservoir: N 38d04'26" W 111d22'09"
- High Ranger Trailhead: N 38d04'37" W 111d22'03"
- Pleasant Creek Campground: N 38d06'07" W 111d20'13"
- Rosebud ATV Trailhead: N 38d05'52" W 111d20'09"
- Lower Bowns Campground: N 38d06'20" W 111d16'39"
- Trailhead at Lower Bowns: N 38d06'14" W 111d16'33"
- Oak Creek Campground: N 38d05'23" W 111d20'29"





Torrey

Boulder

Legend

- Trailheads
- ATV Staging Locations
- Rosebud Trail
- Slickrock Trail
- Sawmill Bench Trail
- Big Ridge Trail
- Oak Crk Reservoir Trail
- USFS Main Rds
- State Highways

Lower Bowns Reservoir

Lower Bowns Campground & Trailhead

Oak Creek Trailhead

Slickrock Trailhead

Slickrock Trailhead

Oak Creek Campground

High Ranger Trailhead

Oak Creek Reservoir

Rosebud Campground

Pleasant Creek Campground

Rosebud ATV Trailhead

USFS RD 168

USFS RD 168